

ryf ag



Ryf AG
Bettlachstrasse 2 · 2540 Grenchen
t 032 654 21 00 · f 032 654 21 09
www.ryfag.ch
microscopes · metrology · imaging



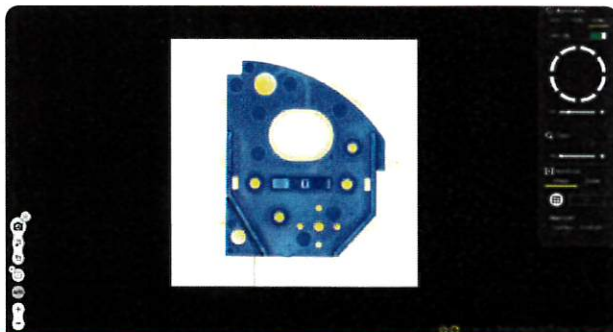
CNC Video Measuring Systems "iNEXIV VMA" Series Imaging Software

Auto MeasureEyes

Easy operation for anyone!

Measurement programs and reports can be created with just a few clicks.

*Pictures shown are concept images



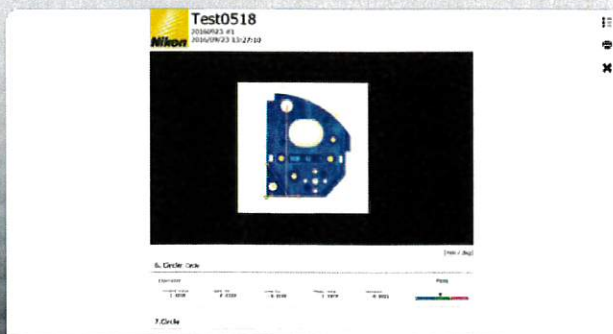
Stitching

Entire images of large samples can be displayed by a stitching process, which can then be used for measurement. (*stitching: bonding of multiple images)



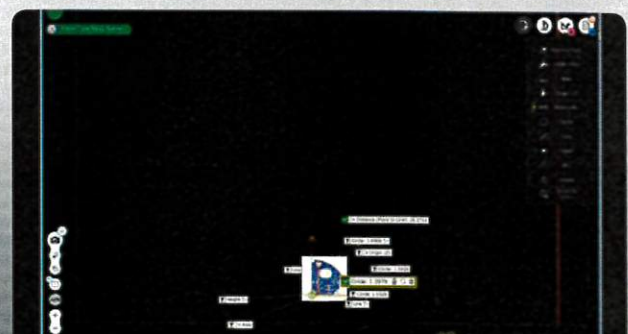
One-Click Measurement

Users can acquire highly precise results by clicking on measurement areas. Detailed settings are no longer required for Auto MeasureEyes.



Easy Programming / Reporting Functions

Procedures taken to conduct measurement become the program itself, allowing users to repeat measurement by simply reloading the program. Measurement result can be exported as OK/NG reports.



Large Stroke / Long Working Distance

Offers maximum stroke of 650x550x200mm and 73.5mm working distance (when using Laser AF 63mm) to be applicable to various samples.

*Combined with VMA software (AutoMeasure), more complex shaped samples can be measured

Specifications



Supported Models

iNEXIV VMA-6555

iNEXIV VMA-4540

iNEXIV VMA-2520

System Requirements

OS	Windows® 7 Professional SP1 (64bit) Windows® 10 Professional (64bit)
CPU	2.8 GHz 4 core
RAM	4GB or more
HDD	500GB SATA or more
Display Resolution	1366×768 pixel or higher (recommended: 1920×1080)
Language	Japanese, English

Specifications and equipment are subject to change without any notice or obligation on the part of the manufacturer. October 2016 ©2016 NIKON CORPORATION

N.B. Export of the products* in this catalog is controlled under the Japanese Foreign Exchange and Foreign Trade Law. Appropriate export procedures shall be required in case of export from Japan.

*Products: Hardware and its technical information (including software)



WARNING

TO ENSURE CORRECT USAGE, READ THE CORRESPONDING MANUALS CAREFULLY BEFORE USING THE EQUIPMENT.



ryf ag



Ryf AG
Bettlachstrasse 2
2540 Grenchen
tel 032 654 21 00
fax 032 654 21 09
www.ryfag.ch



ISO 9001 Certified
for NIKON CORPORATION
Microscope Solutions Business Unit
Industrial Metrology Business Unit



ISO 14001 Certified
for NIKON CORPORATION