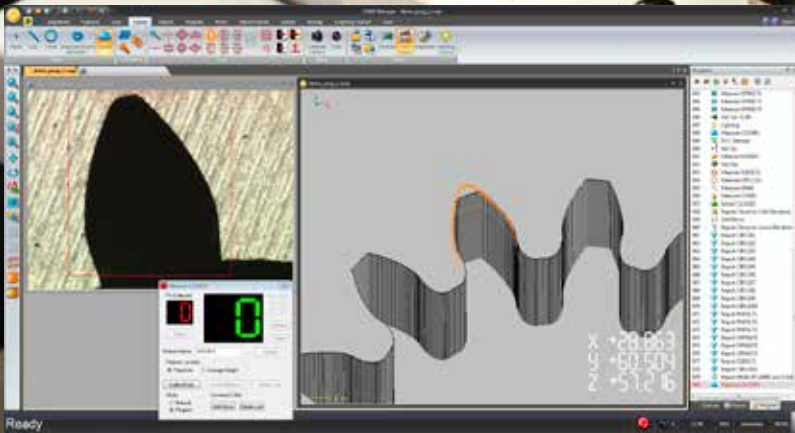
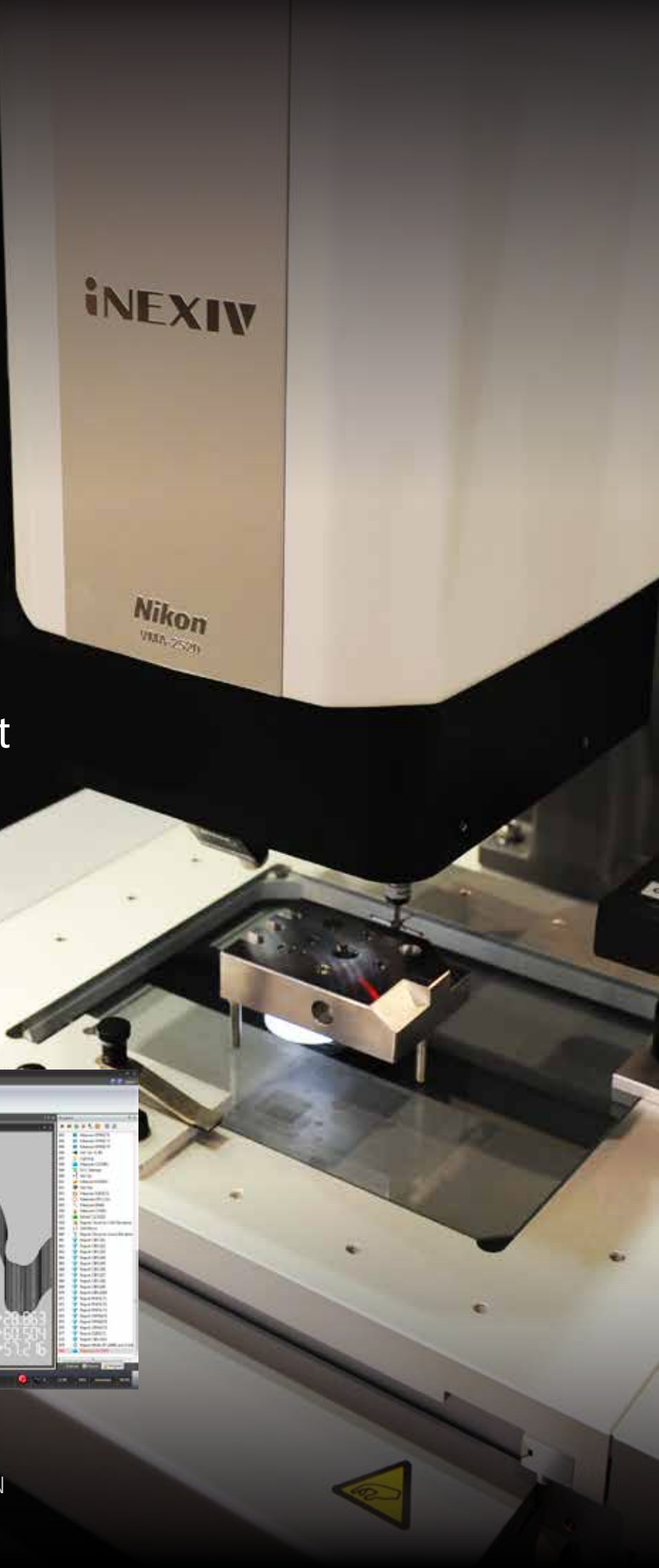




# CMM-Manager for iNexiv

Expand the capabilities of  
multi-sensor measurement



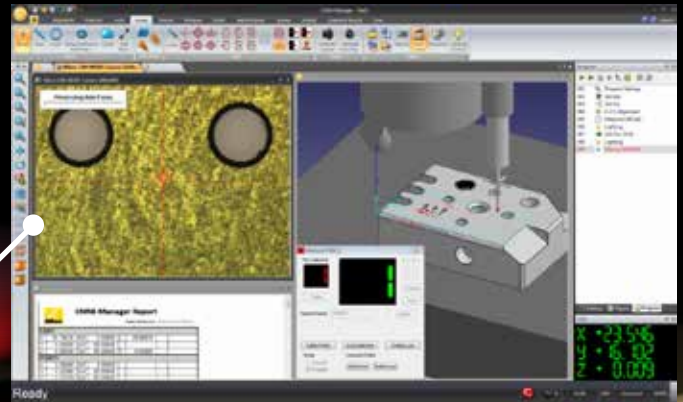
# EASY TO USE, RICH FUNCTIONALITIES

Expand your 3D tactile and video measuring capabilities with **CMM-Manager**, now available on Nikon iNEXIV hardware.

**CMM-Manager** is task-oriented, highly intuitive and offers powerful measuring and reporting capabilities. Main features are collision-free CAD-based path definition, virtual path simulation and accurate feature measurement for both tactile and vision probing.

## BENEFITS

- Intuitive** - Task-oriented, user-friendly interface
- Easy** – Drag and drop program structure
- Powerful** - CAD based alignment, programming, measurement & reporting
- Flexible** - Unified CMM, arm & vision software
- True 3D multi-sensor** - Vision / Laser AF / Tactile / Rotary indexer



## Multi-sensor 3D CAD collision-free measurement

CMM-Manager integrates vision measuring, autofocus laser scanning, touch probing and rotary indexing to provide a true 3D multi-sensor system for inspecting physical products based on CAD models.

## Vision

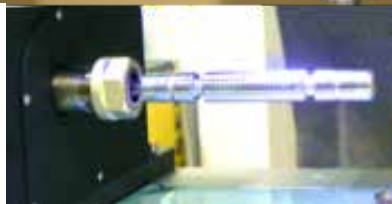
Large Field-of-View, fast and accurate autofocus, edge detection, point filtering and versatile illumination.

## Laser

High speed, high accuracy height measurement, regardless of video magnification.

## Rotary indexer

Better tactile or vision probe accessibility for measuring round items.



## Tactile

TP20 or TP200 touch probes to measure 3D surfaces or features that the vision camera cannot access.

# ALIGN, MEASURE, REPORT, RUN...

## Complete alignment toolbox

- Canned alignments for simple part geometry
- Advanced alignments for any part regardless of complexity or geometry.
- Create alignment from features measured by touch probe, vision sensor or laser AF
- CAD import
  - 2D DXF / IGES
  - 3D IGES / STEP
  - 3D Native formats



## Efficient measurements

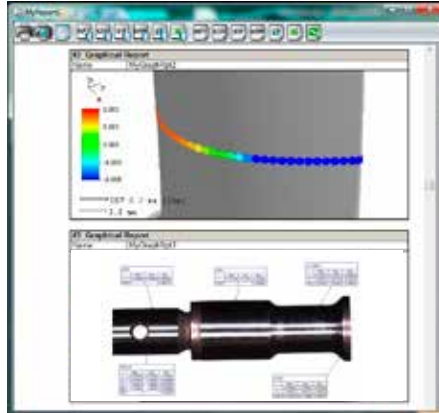
- Pick CAD features to create collision-free probe paths for tactile and vision measurements.
- Seamless transition from touch probe, vision probe and laser AF measurements
- Optimize measurement routine by drag-n-drop program editing



## Extensive reporting

Print, save or output reports to external systems such as SPC software.

- Excel, PDF, Text, HTML, CSV
- 3D Color Graphical Reports
- Cross section analysis
- GD&T - ASME Y14.5 2009



## Automated program execution

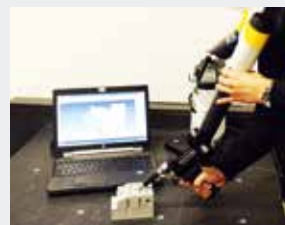
- Batch execution for multi-part inspection
- Automated measurement for parts arranged in rectangular grid
- Create custom program library with Shop Floor Launcher



## CMM-Manager – A multi-platform metrology software

Many metrology laboratories have an extensive set of equipment and have a need for a unified software. CMM-Manager is now available for iNexiv equipment, but can also be used on articulated arms, manual and CNC CMMs. This multi-platform use facilitates operator training, data exchange and software support.

Information on CMM-Manager capabilities and the supported systems can be found on [www.cmm-manager.com](http://www.cmm-manager.com)

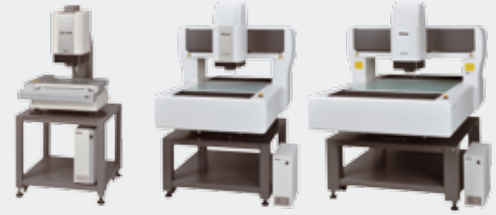


MCAx articulated measuring arm



Altera coordinate measuring machine

# SPECIFICATIONS



	VMA-2520	VMA-4540	VMA-6555
Stroke XYZ (mm)	250 x 200 x 200	450 x 400 x 200	650 x 550 x 200
Max. permissible error <sup>1</sup> EUX,MPE EUY,MPE EUXY,MPE EUZ,MPE (L = Length in mm)	2+8L/1000 µm 3+8L/1000 µm 3+L/50 µm	2+6L/1000 µm 3+6L/1000 µm 3+L/100 µm	
Available probing	2D Vision (color or B&W) Laser AF (Z depth) <sup>2</sup> Tactile probe - TP20 / TP200		
Illumination Contour illumination Surface illumination Oblique illumination	White LED diasopic illumination White LED episopic illumination 8-segment white LED ring illumination		
Optional accessories	MCR20 Probe rack Rotary indexer Gear evaluation software		

<sup>1</sup> Nikon's in-house test at 20°C ±0.5k

<sup>2</sup> Laser AF is a Class 1 Laser Product

Full specifications are available in iNEXIV VMA-series brochure

## Applications

- Sheet metal parts
- Mechanical parts
- Plastic molded and rubber parts,
- Implants
- Watch components, gears
- Connectors
- PCB's, lead frames, semiconductor, MEMS.

