

Stereo Microscopy - Life Science Research

# MAKE INSIGHTFUL DECISIONS

S Series Stereo Microscopes  
with TL3000 Ergo TL base



# INSIGHTFUL DECISIONS IN LIFE SCIENCE RESEARCH

From sorting and screening of model organisms to specimen dissection and preparation, S series Leica stereo microscopes show you more relevant details. This fully apochromatically corrected microscope systems provide superior color reproduction and sharp images.

## S9 and S APO Greenough stereo microscopes



### Individual outfits for your needs: S9 stereo microscopes

- > 12 mm depth of field and FusionOptics technology for uncompromised depth of field and high resolution at once
- > 6.1x- 55x magnification, NA 0.084 up to 0.168 with a supplemental lens, and 9:1 zoom for quick changes from overview to details
- > 122 mm working distance for convenient and ergonomic manipulations
- > S9 i with integrated, network-camera for easy image sharing

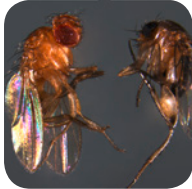
### High magnification challenges: S APO stereo microscope

- > 10x- 80x magnification ideal for quality control, cell sorting, and micro injection applications
- > Large 8:1 zoom range
- > NA 0.1 up to 0.2 with a supplemental lens
- > 75 mm working distance for easy access to the sample
- > Integrated documentation port for connection of a digital camera

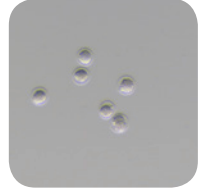


## Designed for your applications

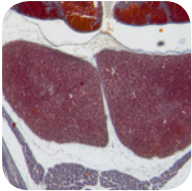
Model  
Organisms



Oocytes



Develop-  
mental  
Biology



Entomology



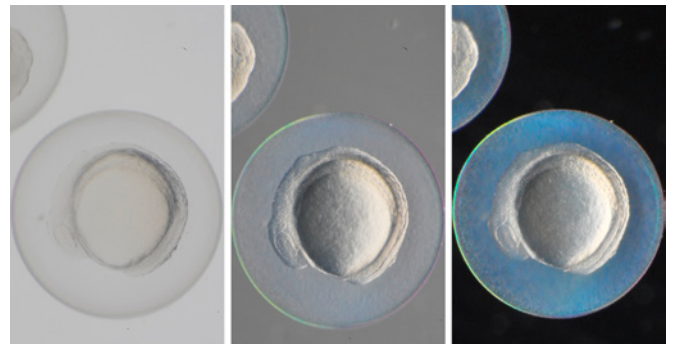
## The perfect combination for more insight with TL3000 Ergo transmitted light base

Reveal more structural information in your samples with high resolution, natural color fidelity, and optimized contrast.

- > Intuitive manual operation of contrast methods and brightness
- > High contrast and uncompromised resolution at the same time
- > Even contrasting over the entire magnification range
- > Fully coded base with a power outlet for cameras
- > Large illuminated field of view with 65 mm diameter to study entire organisms with high precision.
- > Easy fine-tuning of the contrast with just the turn of a single knob

## Three different contrast options with the TL3000

- > Brightfield illumination: See your sample in sharp detail with natural colors on a bright surface.
- > Rottermann contrast: See outlines and other previously invisible structures of your sample.
- > Darkfield illumination: Discover small light scattering structures shining brightly in front of a pitch black background.



Zebrafish development, 10 somites stage. Follow semantic segmentation in high detail. Sample courtesy: Vermot Laboratory, IGBMC, Strasbourg, France

## TECHNICAL SPECIFICATIONS

	S9 E	S9 D	S9 i	S AP0
Optical system, lead-free	10° Greenough using best-corrected central part of the objective; complete apochromatically corrected microscope system			12° Greenough using best-corrected central part of the objective
Zoom	9:1, apochromatic			8:1, apochromatic
Viewing angle	35°			38°
ESD protection	Antistatic			
Specific surface resistivity	2 × 10 <sup>11</sup> Ω / square, discharge time < 2 seconds from 1,000 V to 100 V			
Magnification range (basic outfit)	6.1× – 55×			10× – 80×
Maximum resolution	500 lp / mm			600 lp / mm
Maximum numerical aperture	0.167			0.2
Working distance (basic outfit)	122 mm			75 mm
Object field diameter	37.7 mm			23 mm
Adjustable zoom limits	Click-stops 10×, 20×, 30×, 40×, and 50×			2
Video/photo outlet	-	50 % video 50 % visual, permanent	-	100 % visual or 100 % video/photo and 100 % visual in the right eyepiece
Integrated camera	-	-	10 MP resolution Live image up to 35 fps (1,024 × 768 pixels) Sensor size 6.44 mm × 4.6 mm, 1/2.3" CMOS Pixel size 1.67 μm × 1.67 μm	-
Standard objectives, lead-free	Apochromats 0.5×, 0.63×, 0.75×, 1.6×, 2.0×			Apochromats 0.63×, 1.6×, 2.0×
Ergonomic eyepieces, fixed and adjustable, with cups	10× / 23, 16× / 16, 20× / 12			
Ergonomic eyepieces for eyeglass wearers, adjustable, with eyecups	10× / 23, 16× / 15, 25× / 9.5, 40× / 6			
Interpupillary distance	50 – 76 mm			

RYF AG  
Showroom  
Bettlachstrasse 2  
CH-2540 Grenchen  
Tel +41 32 654 21 00  
Fax +41 32 654 21 09

RYF SA  
Showroom, Sales Office  
Route de Genève 9c  
1291 Commugny  
Tél +41 22 776 82 28  
Fax +41 22 776 82 29

RYF AG (Zürich)  
Sales Office  
Bahnhofstrasse 17  
8400 Winterthur  
Tel +41 52 560 22 25  
Fax +41 52 560 21 0