

## Leica S Series, M Series



## LED Ring lights

Ring light inner Ø 66 mm

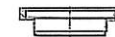


## Objective diameter

- 66 mm no adapter needed

- 58 mm **595-32-258**  
 Adapter 66/58

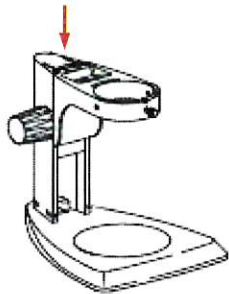
- 80 mm **Leica part #**  
**10 447 078**  
 Adapter 66/80



## Dual Hi Power Spots

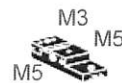
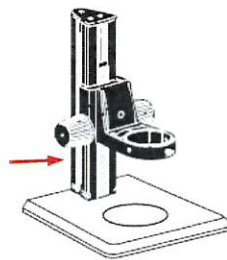
## Stand Adapters

S-Stands S4 ... S8Apo  
 e.g. 10 446 339



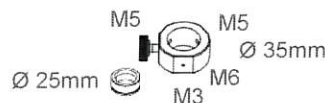
**619-20-050**

Stands M50 ... M80  
 e.g. 10 450 171



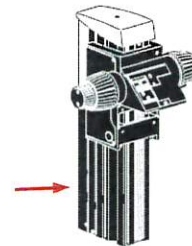
**Leica part #**  
**10 450 570**

Boom Stands 35 mm  
 pillar, 35 mm extension

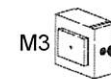


**619-20-049**

Stands M125 ... 205  
 e.g. 10 450 128

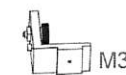
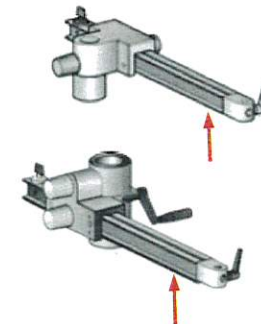


Fits with or w/o  
 electronics unit



**Leica part #**  
**10 450 205**

Boom Stands  
 10 447 098, 10 447 099



**595-30-086**