




**Stability –**  
 giving you a reliable research tool  
 you can count on.

# User Guide for Tree view tool of PROGRES GRYPHAX® software

The “**Tree view tool**” of PROGRES GRYPHAX® software enables user to save, organize and handle media destination folder structure easily inside of GRAPHAX software without leaving software.

## General description:

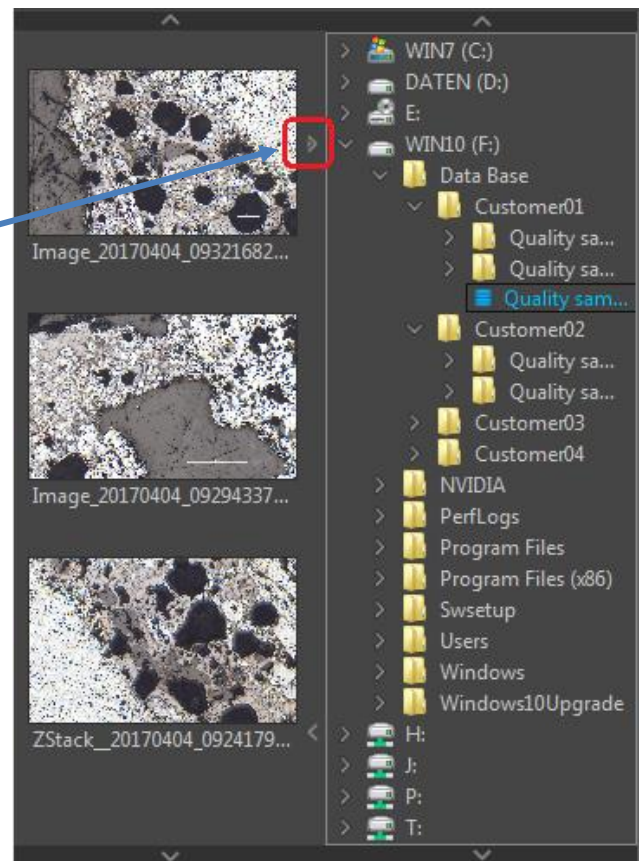
The *Tree view tool* is located on the left software side next to the Gallery. It can be used with and without opened Gallery. Tree view deliver two different sizes: “**Narrow**” or “**Wide**” to display the media target tree.

To open, expand or close of the *Tree view tool* press the top left arrow  on the left software side or use the keyboard short cut (ctrl / cmd + D).

Note: After **first software start** the *Tree view tool* is starting and displaying the default destination folder of operating system “own Pictures” from current user.

Alternatively, the Tree view is automatically displaying and using the **last used destination folder** from last software session or from activated user profile.

The media destination folder of Tree view is always synchronized with the software preferences under *storage options*.



The currently used destination folder for media storage is displayed with the save icon  and colored in “blue” characters  **Quality sample 2017-04-03**. All images and media files of selected destination folder are displayed at the software *Gallery*.



## Change storage folder

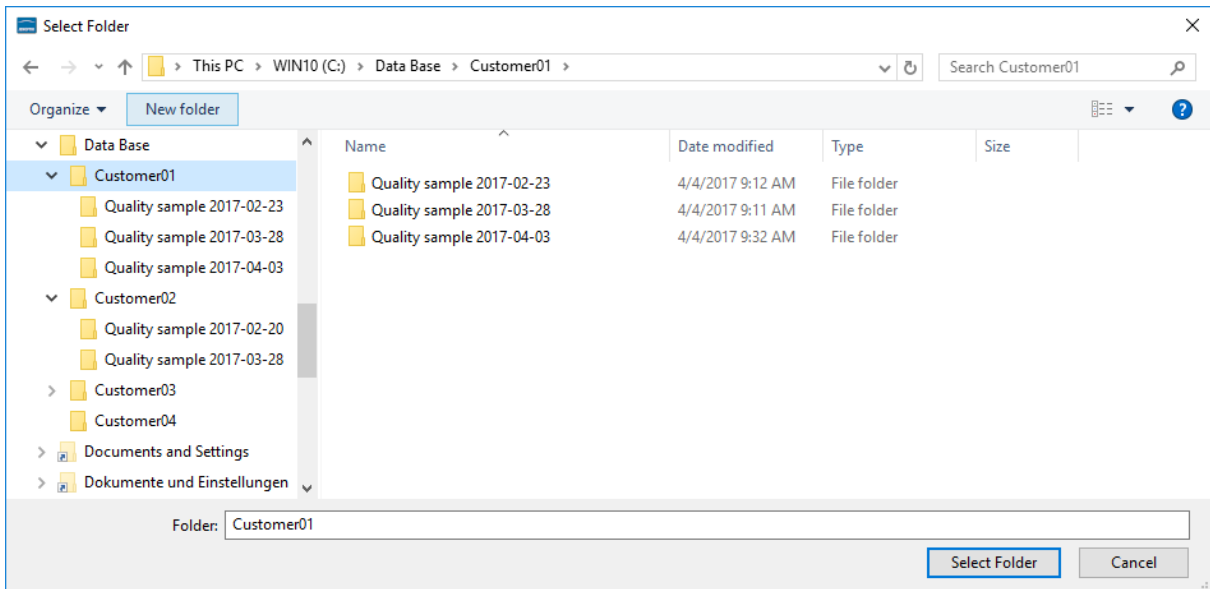
To [change](#) media destination folder please double click by left-hand mouse click on according destination folder from tree view. After change of destination folder, the *Gallery* will display all media files of new selected folder. All new captured images and media files will be save to the selected folder.

## Create new storage folder

To [create new folder](#) or subfolders, please make a right-hand mouse click into the folder tree to activate the *Tree view* edit option menu:


Change tree using File Explorer

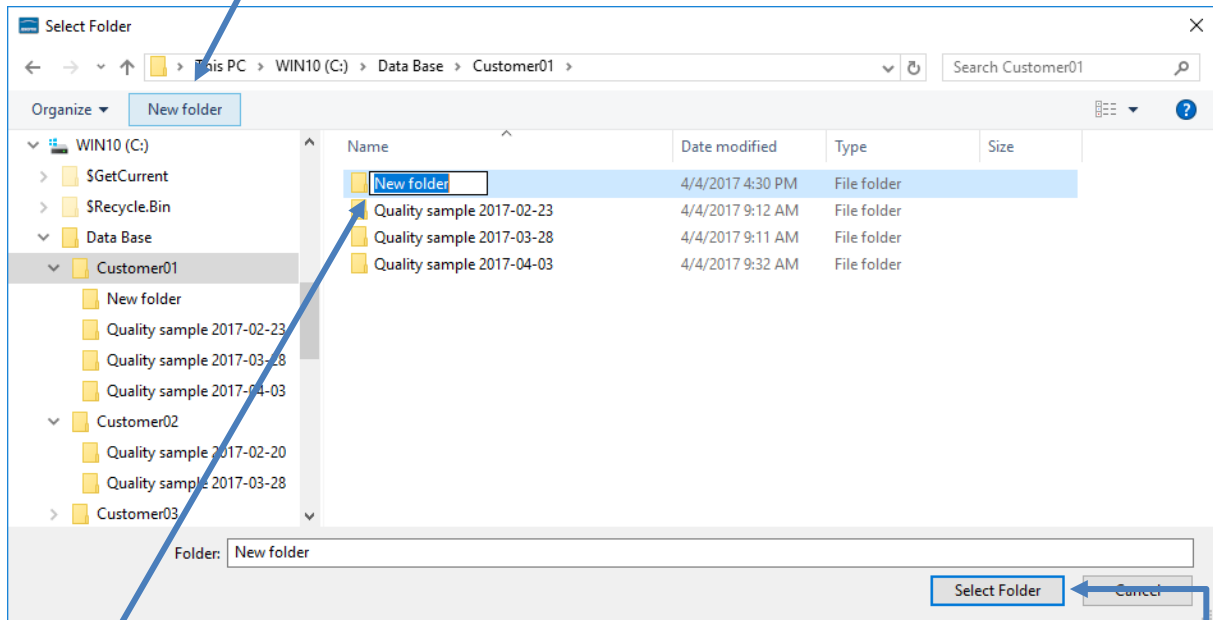
With mouse click on menu: "Change tree using File Explorer" an operating system specific edit window will be opened.



Note: At the Tree view folder edit window you can use the typical functions of operating system.

To [add a new folder](#) or subfolder you have to navigate to the folder tree and press button:

“New folder” . A new folder will be created and can be renamed afterwards.




To [rename](#) an existing folder please use the operating system function by “right-hand mouse click” and option: “Rename”.

To [delete](#) an existing folder after selection use keyboard key “DEL” or use operating system function by “right-hand mouse click” and option: “Delete”.

To [select](#) the media destination folder for images and media files by double click and define with button: “Select Folder” .

Note: The edit window will close automatically after folder selection by press “Select Folder”. With close of edit window using button: “Cancel” the software select the default destination folder of operating system “own Pictures” from current user as media destination folder.

### Record to new destination folder

To [record new images](#) or media files to new defined destination folder just press “REC” button  to start record and the files will be displayed at the GRYPHAX *Gallery*.

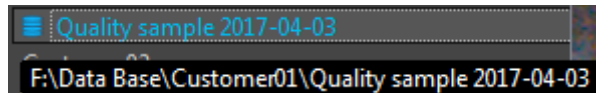


### Navigation:

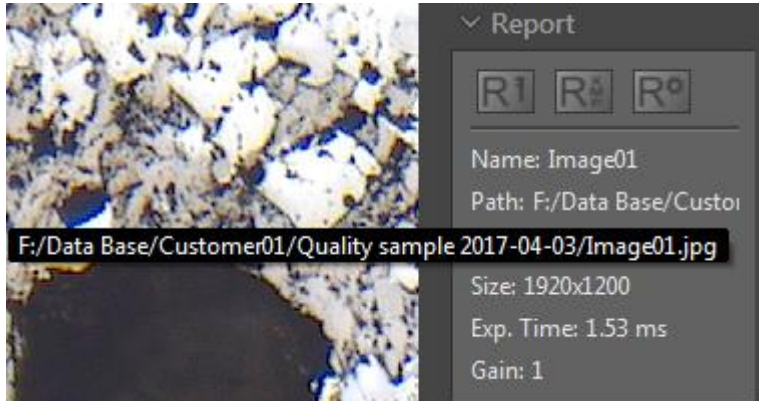
Vertically scrolling via mouse wheel or scroll bars . Scroll bars appears if current tree view does not fit into available space.

### View destination path:

To quickly display the complete destination path of each folder you can use the tooltip at *Tree view tool*. Hold the mouse pointer over according folder of tree view until complete path will be displayed (hover).



To display the destination path of saved images from Gallery without *Tree view tool* you can use the path information of "Report" widget. Hold the mouse pointer over Path of Report widget until complete path will be displayed (hover).



Learn more about PROGRES GRYPHAX® software and the easy workflows and tools.

Watch our video tutorials.

[VIDEO TUTORIALS](#)

HELPFUL? We appreciate your feedback.

[FEEDBACK](#)

We looking forward to hearing from you and remain sincerely,

Your PROGRES GRYPHAX® Team