



**Stability –**  
 giving you a reliable research tool  
 you can count on.




## User Guide for Gallery tool of PROGRES GRYPHAX® software

The “**Gallery**” of PROGRES GRYPHAX® software enables user to preview and display all saved media files of media destination folder or from selected destination path of “*Tree view*” tool easily inside of GRYPHAX software.

### General description:

The *Gallery* is located on the left software side next to the *Tree view* tool. It can be used with and without opened *Tree view* tool. The Gallery consist of two parts. The Gallery preview window and the Gallery bar. The Gallery preview window shows thumbnails from the media files of selected destination folder. The Gallery bar contains additional options for selected items from Gallery.

To **open or close** of the *Gallery tool*/press the bottom arrow  on the left software side or use the keyboard short cut (**ctrl / cmd + G**).

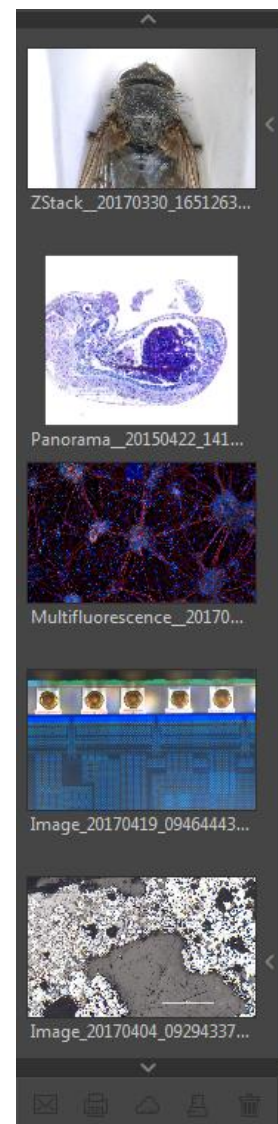
The *Gallery* shows the thumbnails in order of the file time stamp from top to bottom. New recorded images / media files will be add on top position of Gallery preview window.

After **first software start** the *Gallery tool* is collapsed and will displaying the media files of default destination folder of operating system: “own Pictures” from current user after opening.

To change the media destination folder you can use the *Tree view* tool or change folder at the software preferences under *storage options*.

At the Gallery preview window you can use operation system typical short cuts (e.g. ctrl + A; shift-key + mouse click) to select items.

Note: The more images are stored in a folder and are loaded in a Gallery, the longer it will take to display a single image. To enable an easier workflow with GRYPHAX, we recommend you to reduce the number of images in the target folder by changing the target folder from time to time, by deleting some images or by copying them to another folder.



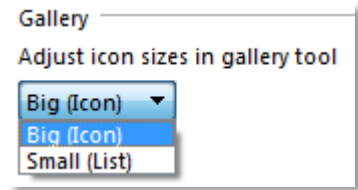


## Change thumbnail view


The thumbnail view can be displayed by two different options:

- A large thumbnail preview as default setting
- Or a small list preview

To [change](#) thumbnail preview of Gallery window, open Preferences / General / Gallery



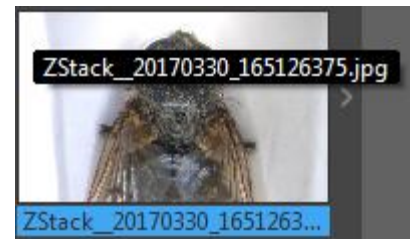
## Navigation:

Vertically scrolling via mouse wheel or scroll bars . Scroll bars appears if number of media file thumbnails exceeds available space of gallery window.

## Show complete file name:

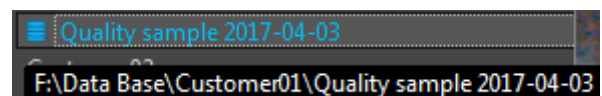
To show the complete name of media file, you can use the tooltip of thumbnail.

Hold the mouse pointer over according media thumbnail at gallery window until complete file name will be displayed (hover).

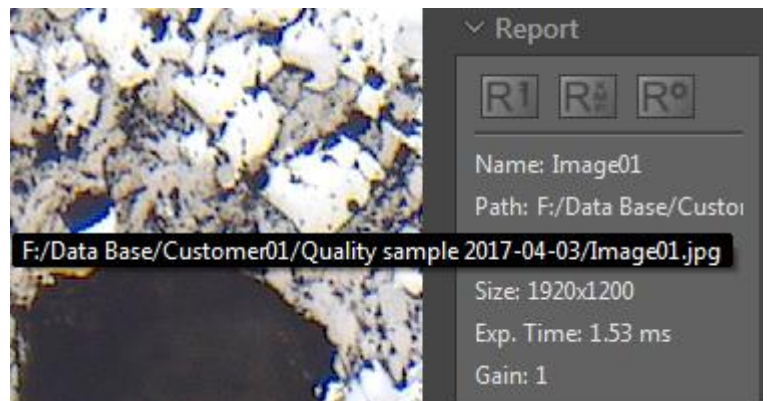


## View destination path:

To quickly [display the complete destination path](#) of each folder you can use the tooltip at *Tree view tool*. Hold the mouse pointer over according folder of tree view until complete path will be displayed (hover).



To display the [destination path of saved images](#) from Gallery without *Tree view tool* you can use the path information of "Report" widget. Hold the mouse pointer over Path of Report widget until complete path will be displayed (hover).





## Media file structure:

With the storage option "Auto save" all recorded media files will be saved with an automatic given naming structure. The file name contains the following: **prefix**, **date**, **time** and the **file extension** separated by an underline "\_". This structure cannot be changed by user.

As example: "Image\_20170419\_094644439.jpg"  
**prefix\_date\_time.file extension**

The **prefix** for single shot images is "Image" as default setting and can be changed by user under Preferences / Storage Options / File Name (default = "Image")

Depending on media type the file "**prefix**" will be automatically given by software as follows:

- For Panorama images = **Panorama**\_date\_time.file extension
- For Z-Stacking images = **ZStack**\_date\_time.file extension
- For merge Fluorescence images = **Multifluorescence**\_date\_time.file extension
- For Fluorescence filter set images = **Filterset**\_date\_time.file extension
- For Video files = **Video**\_date\_time.file extension
- For Service images = **Service**\_date\_time.file extension

With this structure user can easily distinguish between different images file types.

The **date** and **time** structure: YYYYMMDD\_hhmmss(ms)(ms)(ms) is the given date stamp automatically during file saving by software.

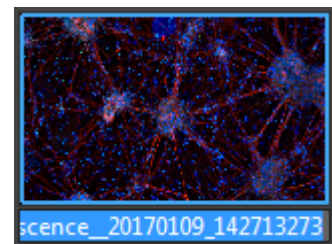
- Y = Year
- M = Month
- D = Day
- h = hour
- m = minutes
- s = seconds
- ms = milliseconds

The **file extension** depends on the used storage file format (\*.jpg ; \*.bmp ; \*.tif ; \*.png). Storage format can be changed under Preferences / Storage Options / Image Format.

## Rename files:

To [rename media files](#), please make a mouse click on the according thumbnail to mark and click a second time to the displayed name text under the thumbnail to activate renaming. You can now overwrite the current image name by a new text containing letters or numbers. You can leave the overwrite mode by clicking on another image or by press enter key.

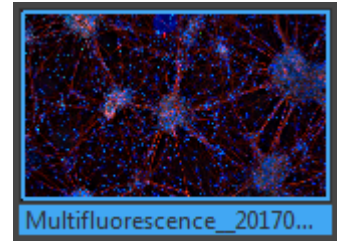
Note: The file extension will be not changed at Gallery.



### Status of selection:

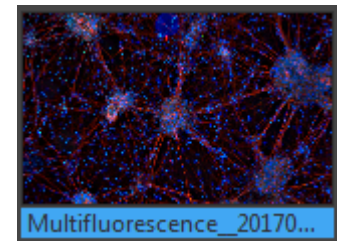
To [display a "recorded" item](#) from Gallery on GRYPHAX image window double-click to the according thumbnail.

The thumbnail in the Gallery change their display state. Thumbnail will be bordered by a blue line and file name background will be colored in blue.



[Select item](#) by left-mouse click to the thumbnail within the gallery to remove or execute any option from Gallery bar.

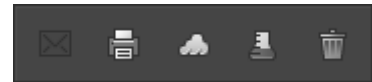
The thumbnail in the Gallery change their display state. Thumbnail file name background will be colored in blue.




Note: To select multiple items you can use operation systems typical short cuts (e.g. ctrl + A; shift-key + mouse click).


### Gallery bar:

The *Gallery bar* is located at the bottom of Gallery preview window and contains the following options:



 E-Mail – to send selected items by E-Mail (currently deactivated)

 Print – to print selected items (keyboard shortcut **ctrl / cmd + P**)


 Cloud – to copy selected items to cloud storage folder (Cloud folder can be changed at preferences)

 Analyze – to analyze selected items from Gallery in external applications (Choose App at preferences)

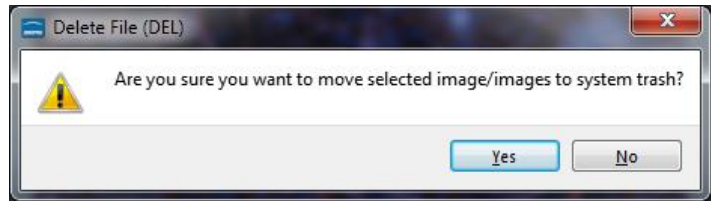
 Trash – to move selected items from Gallery (destination folder) to system trash



### Delete media files:

To [delete media files](#) from Gallery select the according items and use the trash  of Gallery bar or use the keyboard key "DEL".

You will need to accept the prompt "Are you sure to move selected image/ images to system trash?" with "Yes".



Note: The media files will be deleted from the destination folder and will move to the operating system trash!

### Limitation:

- Gallery is not visible during "Presentation" view.
- Gallery cannot show external media files.
- Gallery functions are limited during Multi-Fluorescence mode

Learn more about PROGRES GRYPHAX® software and the easy workflows and tools.

Watch our video tutorials.

[VIDEO TUTORIALS](#)

HELPFUL? We appreciate your feedback.

[FEEDBACK](#)

We looking forward to hearing from you and remain sincerely,

Your PROGRES GRYPHAX® Team