



Stability –
 giving you a reliable research tool
 you can count on.



User Guide for Grid mode of PROGRES GRYPHAX® software

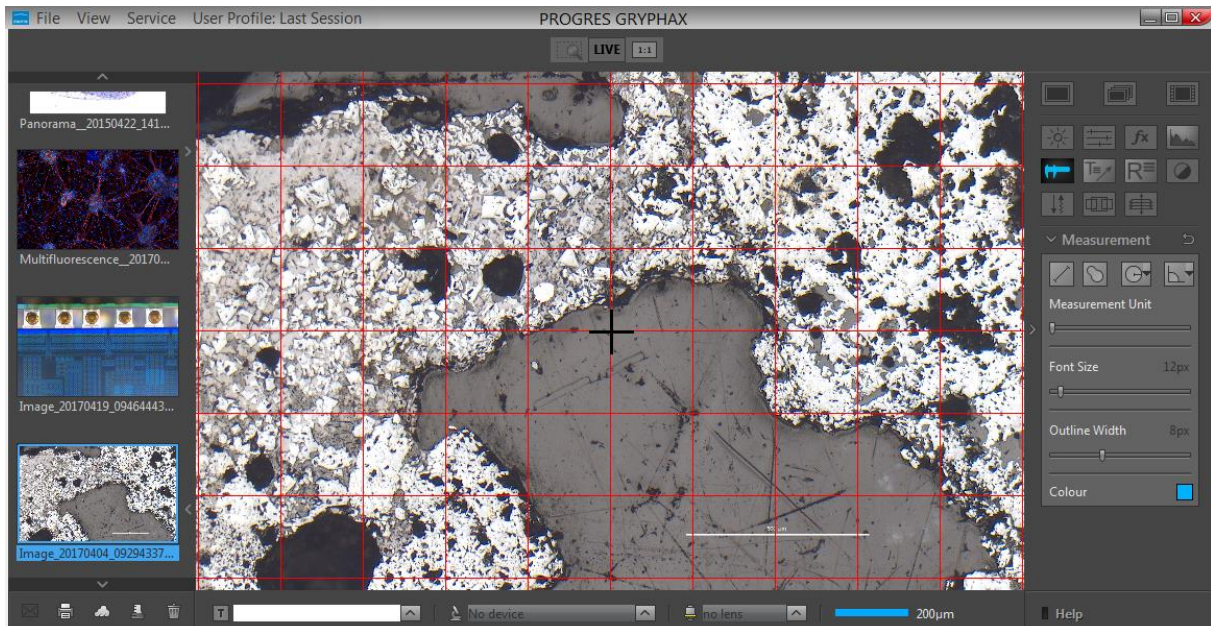
The “*Grid mode*” of PROGRES GRYPHAX® software enables user to overlay a Grid or crosshairs over the live image stream or recorded items from Gallery.

General description:

The *Grid mode* is part of the GRYPHAX software. It enables user to overlay a grid or crosshairs over the live image stream or recorded items from Gallery. The displayed grid or crosshairs will be not saved to the recorded images or video files.

Use the grid to adjust the alignment of specimen to the image stream of camera. See also example below. Additionally, the crosshairs will display the center of the image.

Grid mode activated:



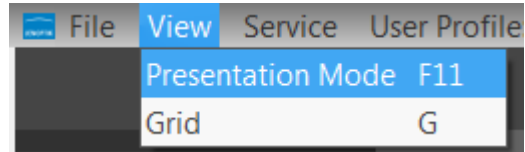
RYF AG
 Showroom
 Bettlachstrasse 2
 CH-2540 Grenchen
 Tel +41 32 654 21 00
 Fax +41 32 654 21 09

RYF SA
 Showroom, Sales Office
 Route de Genève 9c
 1291 Commugny
 Tél +41 22 776 82 28
 Fax +41 22 776 82 29

RYF AG (Zürich)
 Sales Office
 Bahnhofstrasse 17
 8400 Winterthur
 Tel +41 52 560 22 25
 Fax +41 52 560 21 0

Start Grid mode:

To **start** the *Grid mode* use the keyboard key (**G**) or start by using the title bar menu at GRYPHAX software under View / Grid.

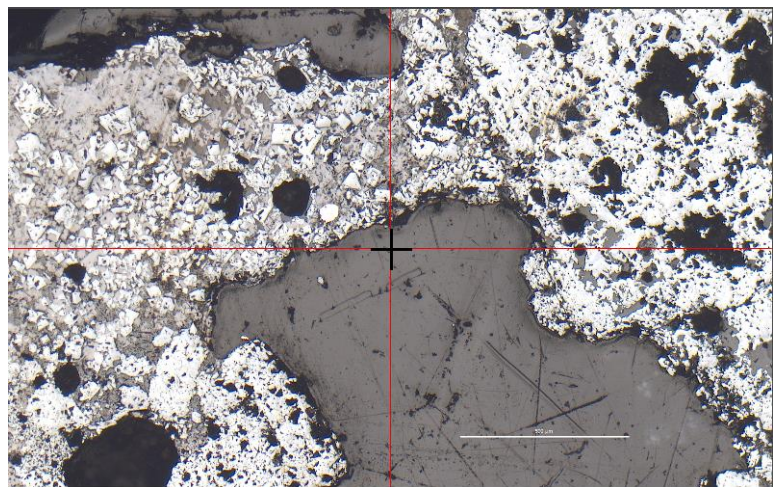


Note: This submenu is enabled if any meaningful image/video is shown in the image window.

Change line distance:

To **change** the line distance of *Grid* use the mouse wheel and scroll up to enlarge the factor or scroll down to lower the factor.

Additionally, a crosshairs would be displayed only if the line distance factor reach the maximum image width or height. See adjacent screen shot.



Note: The color of cross is fixed to black.

Change color:

To **change** the color of Grid, open Preferences from title bar and change the color of Grid section under Preferences / Elements of Style / Grid

Leave Grid mode:

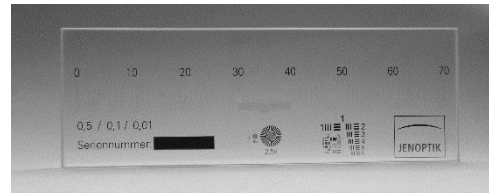
To **leave** the *Grid mode* use the keyboard key (**G**) or by using the title bar menu at GRYPHAX software under View / Grid.

Note: Last used line distance factor and grid colour will be stored at software settings and are reused after start of *Grid mode* again.

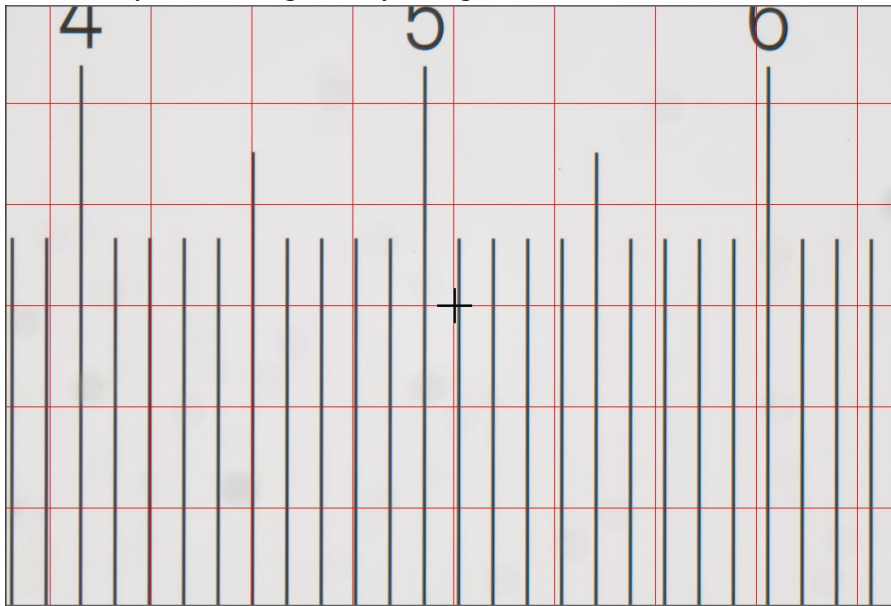
Example for Grid mode:

To reach to best results with e.g. *Panorama tool* you have to [adjust the alignment](#) of camera related to the stage

To adjust the correct alignment you can use the Grid function and the PROGRES GRYPHAX® calibration slide (order number: 563683).



Grid overlay on live image to adjust alignment:



Learn more about PROGRES GRYPHAX® software and the easy workflows and tools.

Watch our video tutorials.

[VIDEO TUTORIALS](#)

HELPFUL? We appreciate your feedback.

[FEEDBACK](#)

We looking forward to hearing from you and remain sincerely,

Your PROGRES GRYPHAX® Team

RYF AG
 Showroom
 Bettlachstrasse 2
 CH-2540 Grenchen
 Tel +41 32 654 21 00
 Fax +41 32 654 21 09

RYF SA
 Showroom, Sales Office
 Route de Genève 9c
 1291 Commugny
 Tél +41 22 776 82 28
 Fax +41 22 776 82 29

RYF AG (Zürich)
 Sales Office
 Bahnhofstrasse 17
 8400 Winterthur
 Tel +41 52 560 22 25
 Fax +41 52 560 21 0