



Stability –
giving you a reliable research tool
you can count on.



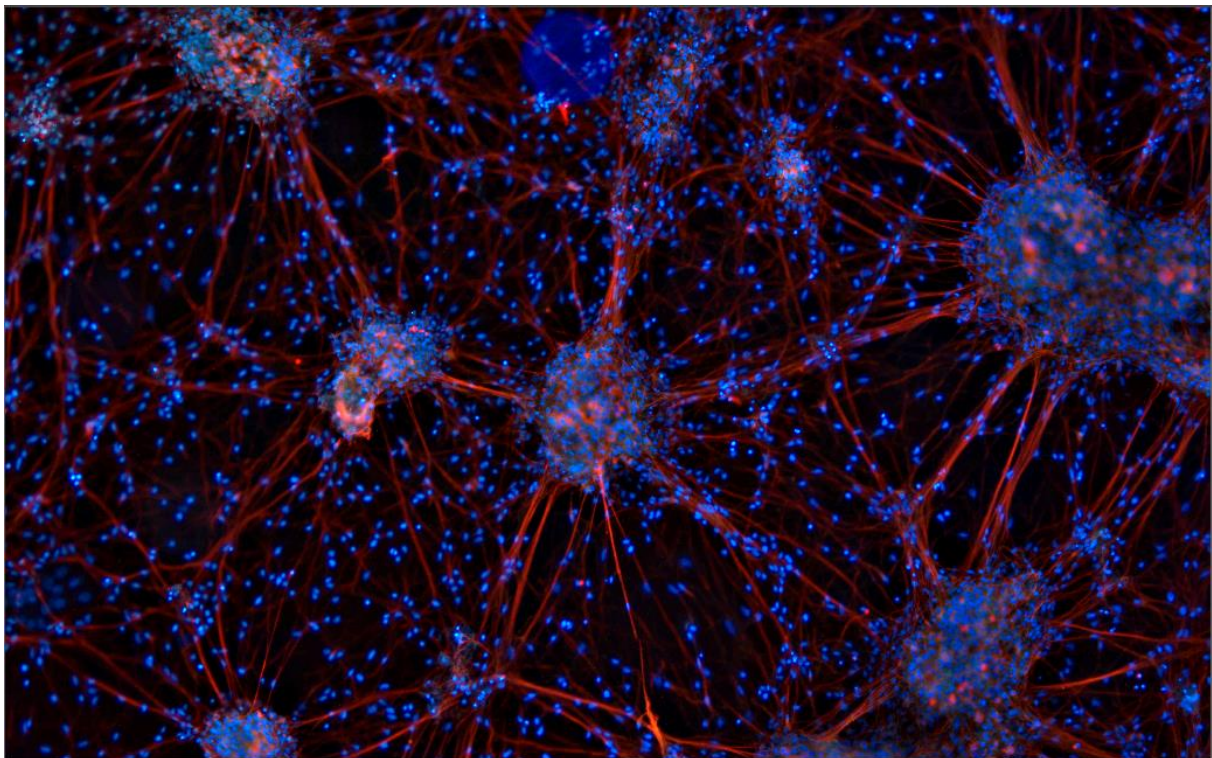
User Guide for Presentation mode of PROGRES GRYPHAX® software

The “**Presentation mode**” of PROGRES GRYPHAX® software enables user to display the live image stream or recorded items from Gallery on whole screen to see all details of images.

General description:

The *Presentation mode* is part of the GRYPHAX software. It enables user to change from standard software view to full screen mode to display the live image stream or recorded items on whole screen. All software tools will be still active at the background but not visible.

Presentation mode activated:



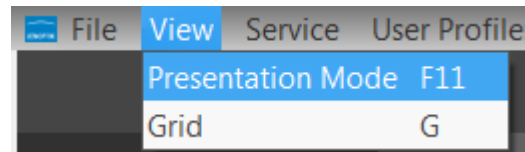
RYF AG
Showroom
Bettlachstrasse 2
CH-2540 Grenchen
Tel +41 32 654 21 00
Fax +41 32 654 21 09

RYF SA
Showroom, Sales Office
Route de Genève 9c
1291 Commugny
Tél +41 22 776 82 28
Fax +41 22 776 82 29

RYF AG (Zürich)
Sales Office
Bahnhofstrasse 17
8400 Winterthur
Tel +41 52 560 22 25
Fax +41 52 560 21 0

Start Presentation mode:

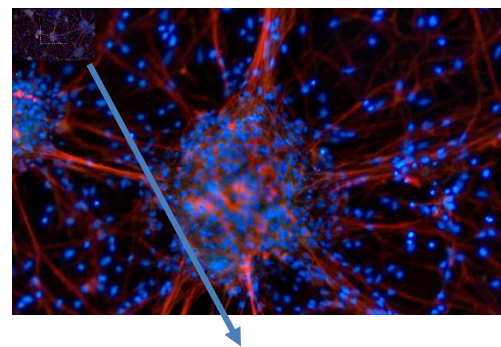
To **start** the *Presentation mode* use the keyboard key (F11) or start by using the Title bar menu at GRYPHAX software ...View/ Presentation Mode.



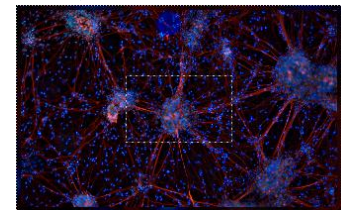
Note: This submenu is enabled if any meaningful image/video is shown in the image window.

Change zoom factor:

To **change** the zoom factor at *Presentation mode* between "1:1" view and scaled "Fit To Screen" view use the keyboard key (Z). The Default view at GRYPHAX software is "Fit To Screen" view. At "1:1" view the image will be display one pixel of the camera/ image as one pixel on the screen.



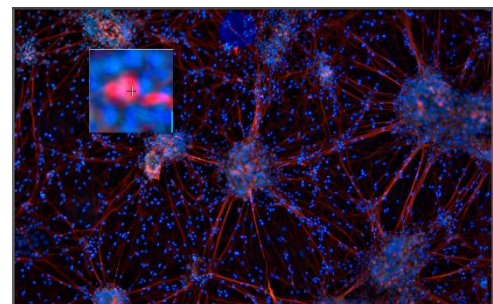
Additionally, a small overview window will be displayed over the image at "1:1" view. The currently displayed part of image is marked as rectangle. The position (RIO) can be moved by mouse operation. Also size and position of overview window can be changed by mouse operation.



Activate magnifier:

To **activate** the *Magnifier tool*  during *Presentation mode* use the keyboard key (Space bar). Hold the space bar and a small floating pane is opened as image window overlay and shows a view of a selected sector as long as the key is pressed.

Zoom level is depending on the used section of "zoom level" under Preferences / General / Magnifier



Record images:

To **record** images during *Presentation mode* you can use the keyboard key (Enter) or (F2). All images will be recorded to previously selected destination folder and can be previewed at software Gallery.

Leave Presentation mode:

To **leave** the *Presentation mode* use the keyboard key **(F11)** or **(ESC)**. Software will change back to the standard software view with all last opened tools as before.

Learn more about PROGRES GRYPHAX® software and the easy workflows and tools.

Watch our video tutorials.

[VIDEO TUTORIALS](#)

HELPFUL? We appreciate your feedback.

[FEEDBACK](#)

We looking forward to hearing from you and remain sincerely,

Your PROGRES GRYPHAX® Team