



Stability –
 giving you a reliable research tool
 you can count on.




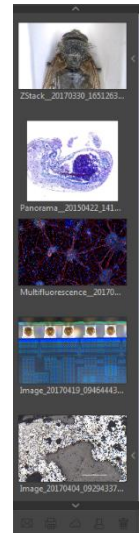
User Guide for Side by Side tool of PROGRES GRYPHAX® software

The “Side by Side tool” of PROGRES GRYPHAX® software enables user to compare images from Gallery with each other or images with live stream from camera easily inside of GRYPHAX software.

General description:

The *Side by Side tool* is part of the *Gallery tool*. The Gallery is located on the left software side next to the *Tree view tool*. The Gallery preview window shows thumbnails from the media files of selected destination folder. The *Side by Side tool* will be activated by operating with mouse only and the Gallery has to be opened in advance.

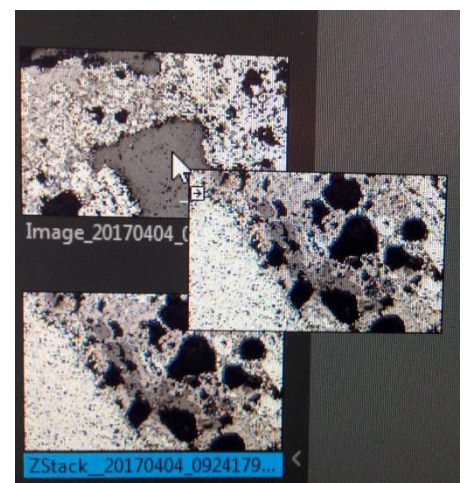
To **open or close** of the *Gallery tool* press the bottom arrow  on the left software side or use the keyboard short cut (**ctrl / cmd + G**).



Start Side by Side mode:

To **start** the *Side by Side* mode there are three possibilities:


1. **Drag and drop** an image thumbnail from Gallery over each other will enable the image comparison of two images. Both images will be displayed side by side at the main image window of GRYPHAX software. Note: Video files are not supported.
2. Select one image from Gallery by double-click on the thumbnail. Image will be displayed on the main image window. Drag and drop second image thumbnail from Gallery into the main image window of GRYPHAX software while first image is displayed. The image can be added on left or right side to the main window.
3. Drag and drop one image thumbnail into the main image window of GRYPHAX software **while live stream** from camera is running. You can drop on the left or the right side of the live window. The Side by Side tool will add the Gallery image according the used side.



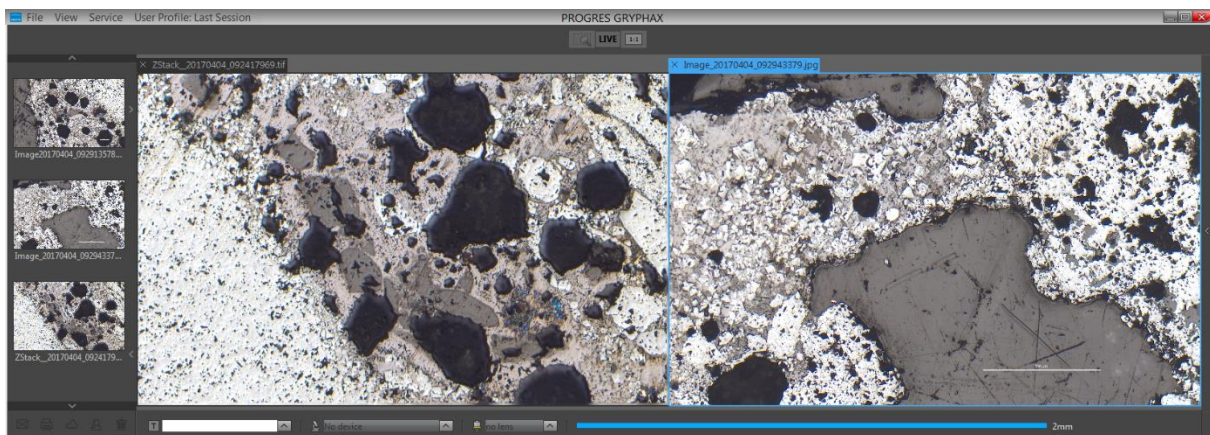
Overview:

At the *Side by Side* mode the image file name of displayed images will be shown on top of the each image.



If a live image from camera is used for comparing at *Side by Side* mode the live stream is named with "Live"  instead of the image file name.

Screen shot of active Side by Side mode using two different images from Gallery:




Note: The image size of different image resolution will be displayed scaled to the image main window of GRYPHAX software. The image with the smaller size is the master, the larger image will be scaled according the size of smaller image.

Change images:

To **change** images at *Side by Side* mode just drag and drop one image thumbnail into the main image window of GRYPHAX software while Side by Side mode is active. You can drop the image on the left or the right side of the main window. The Side by Side tool will exchange the previously displayed image by the new added image from Gallery according the used side.

Leave Side by Side mode:

To **leave** the *Side by Side* mode just close one of the displayed image by using the cross  or double-click on any image thumbnail at the gallery.

Limitation:

- Side by Side mode is not possible with video files
- Measurement and Annotation tool are deactivated during Side by Side mode



Learn more about PROGRES GRYPHAX® software and the easy workflows and tools.

Watch our video tutorials.

[VIDEO TUTORIALS](#)

HELPFUL? We appreciate your feedback.

[FEEDBACK](#)

We looking forward to hearing from you and remain sincerely,

Your PROGRES GRYPHAX® Team

PROGRES
GRYPHAX® SERIES

Release date: 25/04/2017
3/3

ryt ag
Ryf AG
Bettlachstrasse 2 · 2540 Grenchen
t 032 654 21 00 · f 032 654 21 09
www.ryfag.ch
microscopes · metrology · imaging