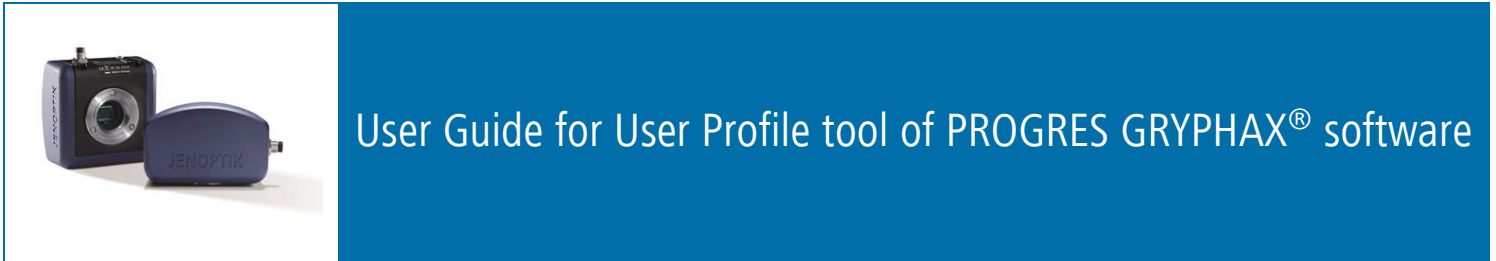




Versatility –
giving you the freedom to work
with your favorite equipment.

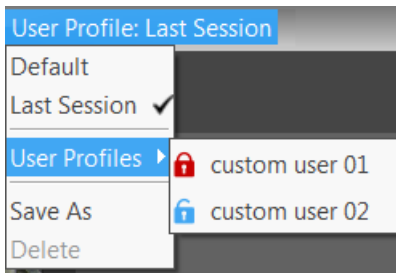


General description:

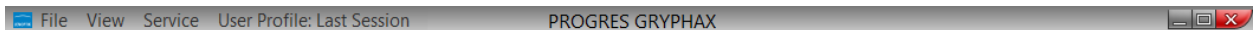
The “User Profile tool” of PROGRES GRYPHAX® software enables user to create user specific software settings profiles to get reproduce able results by identical software and camera settings.

The currently active software settings can be saved in a user profile (preference file). These user profiles can be loaded and applied. Furthermore, the user profiles can be transferred to other computer or platforms. (Windows, MacOS and Linux)

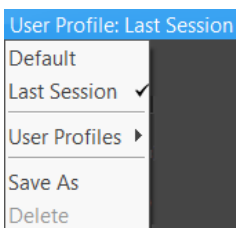
Overview of User Profile menu:



Location:



The User Profile menu is located at the title bar of GRYPHAX software. User has quick access to create or load user profiles. Additionally, the **current** user profile e.g. “Last Session” is prominently displayed at title bar.



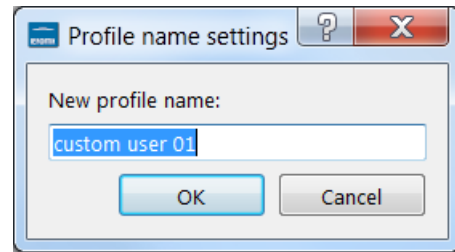
User Profile menu provides the following options:

- Default – **Caution!** Reset all back to factory “default” software settings!
- Last Session – change back to **last stored session** settings of software
- User Profiles – open **profile list** to load already created user profiles
- Save As – save **current** software settings to user profile (optional password **protection**)
- Delete – to delete selected user profile from list

Create:

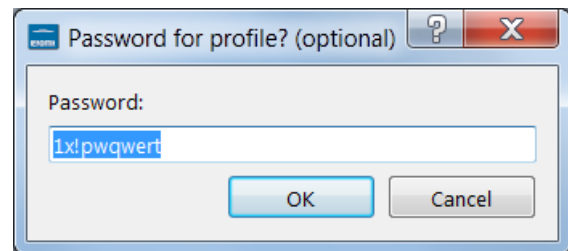
To **create** a unique user profile, pre-define all software setting as required in advance!

After define go to user profile menu and click on option "Save As" to save all current settings to file. A new window to set name of profile will be opened. Enter profile name and proceed with "OK".



After confirm of profile name user can **optionally protect** the user profile by password. (Recommend) Enter an individual password and confirm with "OK" button.

In case that no password protection is needed press "Cancel" button to create profile without password.



Note: Please remember, or make a note of the given password. It can't be changed afterwards!

Protected user profiles are indicated by a **red padlock** at the name. Blue padlock at name indicates an unprotected user profile.



Load:

To **load** a user profile go to user profile menu and click on option "User Profiles" to select profile from list. After loading the profile all software settings from file are loaded as current.

If user change user profile or change back to "Last Session" settings all intermediate changes are not saved and will be lost!

Change profile settings:

To **change** values or setting **from existing user profiles**. Load profile first and make any changes. Afterwards, go to user profile menu and click on option "Save As" and enter profile name which has to be changed. By press "OK" button all changed software settings will be overwritten from user profile.

Note: protected user profiles can't be changed afterwards. Create alternatively a new protected profile.

Delete:

To **delete** a user profile load the corresponding profile from list. Afterwards go to user profile menu and click on option "Delete" to remove profile from list. Profile "Last Session" can't be deleted.

Note: In case of password protected user profile you need to enter correct password to delete.



Wir machen Qualität sichtbar
Nous rendons la qualité visible
Making quality visible

ryfag.ch

MICROSCOPY + METROLOGY SERVICES

Swiss made.

RYF AG
Showroom
Bettlachstrasse 2
CH-2540 Grenchen
Tel +41 32 654 21 00
Fax +41 32 654 21 09

ryfag@ryfag.ch

RYF SA
Showroom, Sales Office
Route de Genève 9c
1291 Commugny
Tél +41 22 776 82 28
Fax +41 22 776 82 29

RYF AG (Zürich)
Sales Office
Bahnhofstrasse 17
8400 Winterthur
Tel +41 52 560 22 25
Fax +41 52 560 21 0

Transfer software settings:

Software settings or "user profiles" can be [transferred](#) to other computer (platform independent) to work with same settings or devices! User can **copy and paste** the software settings files from current computer and transfer to others. User profile file name is similar to given name with extension *.ini.

The current software settings called "Last Session" are stored at settings file: "**lastsession.ini**" located under following folder depending on used operating system:

- Windows OS: „C:\ProgramData\Jenoptik\PROGRES GRYPHAX\profiles\...”
- MacOS: „MacHD/Library/Application Support/Jenoptik\PROGRES GRYPHAX\profiles\...”
- Linux OS: „/var/lib/Jenoptik/PROGRES GRYPHAX/profiles/...”

Important note: Deleting or rename of settings files will lost all software settings and calibrations! Please handle with care! For details about transferring software settings, please have a look to the separate user guide "**Transfer software settings**".

Learn more about PROGRES GRYPHAX® software and the easy workflows and tools.

Watch our video tutorials.

VIDEO TUTORIALS

HELPFUL? We appreciate your feedback.

FEEDBACK

We looking forward to hearing from you and remain sincerely,

Your PROGRES GRYPHAX® Team

RYF AG
Showroom
Bettlachstrasse 2
CH-2540 Grenchen
Tel +41 32 654 21 00
Fax +41 32 654 21 09

ryfag@ryfag.ch

RYF SA
Showroom, Sales Office
Route de Genève 9c
1291 Commugny
Tél +41 22 776 82 28
Fax +41 22 776 82 29

RYF AG (Zürich)
Sales Office
Bahnhofstrasse 17
8400 Winterthur
Tel +41 52 560 22 25
Fax +41 52 560 21 0