

**SCHOTT**  
glass made of ideas

ryf ag



Ryf AG  
Bettlachstrasse 2  
2540 Grenchen  
tel 032 654 21 00  
fax 032 654 21 09

[www.ryfag.ch](http://www.ryfag.ch)

## KL 300 LED

LED Light Source for  
Fiber Optics



## KL 300 LED

### LED Light Source for Fiber Optics

The KL 300 LED is an innovative fiber optic light source which uses cold light to illuminate all types of objects in industrial and life science applications.

Employing state-of-the-art technology, SCHOTT has developed and designed a single LED driven light source to provide an attractive alternative to conventional halogene cold light sources.

The brightness is equivalent to a 30-watt halogene lamp and therefore optimized as a standard illumination system for the requirements of routine microscopes.

Due to its smart design, the KL 300 LED can be mounted to any microscope stand or used as a stand-alone illumination device.

The LED has an extremely long lifetime of at least 50,000 hours. That means users do never have to change bulbs which reduces the costs of ownership and avoids service and downtime costs. Due to 80% lower energy consumption of LED light sources compared to conventional halogene light sources there is additional potential to save money.

Emitting neutral white light (approx. 5,600 K) the KL 300 LED is DC driven. The ripple free illumination is perfect for digital imaging applications. An additional benefit is that the color temperature does not change when the light source is dimmed.

The KL 300 LED combines all advantages of LED light with the advantages of illumination through fiber optics:

Significantly higher light intensities can be focused to a very small field of view.

Further all kinds of light guides of the KL 300 series can be connected to the KL 300 LED. That allows the full flexibility to realize all common illumination techniques and all existing inspection processes remain valid.

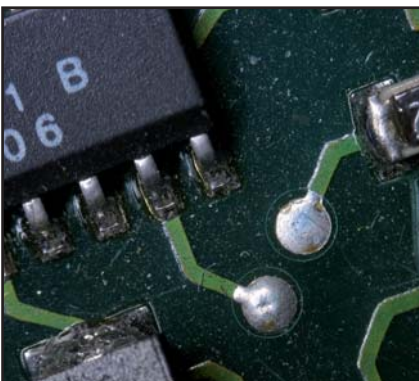
The KL 300 LED offers simple operation combined with excellent value for money.





## KL 300 LED

- Fiber optic light source with single LED light engine
- Brightness is equivalent to a 30-watt halogene cold light source
- Compact housing can be attached directly to microscope stands or is usable as stand-alone
- Continuous dimming (0 – 100 %) with separate on/off switch
- Convection cooling (no fan)
- Wide-range power supply (100 – 240 V, 50 – 60 Hz) with international clip plug system
- Outstanding price performance ratio



ryf ag



Ryf AG

Bettlachstrasse 2

2540 Grenchen

tel 032 654 21 00

fax 032 654 21 09

[www.ryfag.ch](http://www.ryfag.ch)

