



Stability –
giving you a reliable research tool
you can count on.



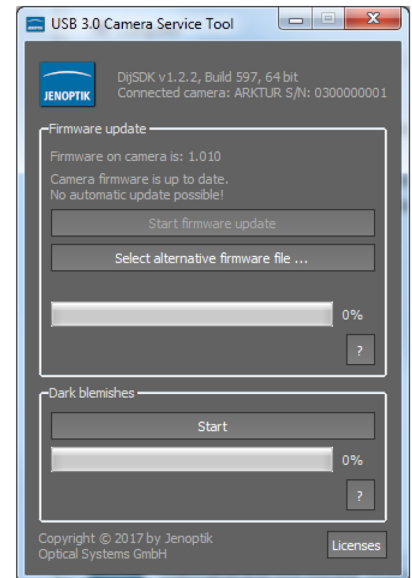
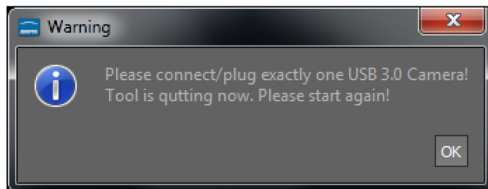
USB 3.0 Camera Service Tool for JENOPTIK GRYPHAX® cameras

Service tool to update camera Firmware version and to detect hot / defective sensor pixel for correction.

The "*USB 3.0 Camera Service Tool*" enables user to **check** the installed camera firmware version and to **update** the firmware version, if necessary. This service tool is part of the GRYPHAX® software installation 1.1.6 or later.

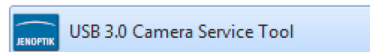
Additionally, the option "*Dark blemishes*" search for defective/ hot pixel is available, to eliminate such pixel defects of the camera sensor.

Note: To operate with the *USB 3.0 Camera Service Tool*, the camera driver has to be installed previously. Please **connect only one camera** to the computer and start the service tool. Otherwise, *USB 3.0 Camera Service Tool* will display an error message:



1. To **start** "*USB 3.0 Camera Service Tool*", please navigate to **start** menu entry under: **Jenoptik/GRYPHAX 2.X.X**

and double-click to:



Or open service tool **directly** from GRYPHAX installation folder under:

Windows OS: C:\Program Files\Jenoptik\GRYPHAX-V2.X.X.XXX\bin\

macOS: /Applications/USB3CameraServiceTool.app

Linux: /usr/local/Jenoptik/GRYPHAX/bin/USB3CameraServiceTool