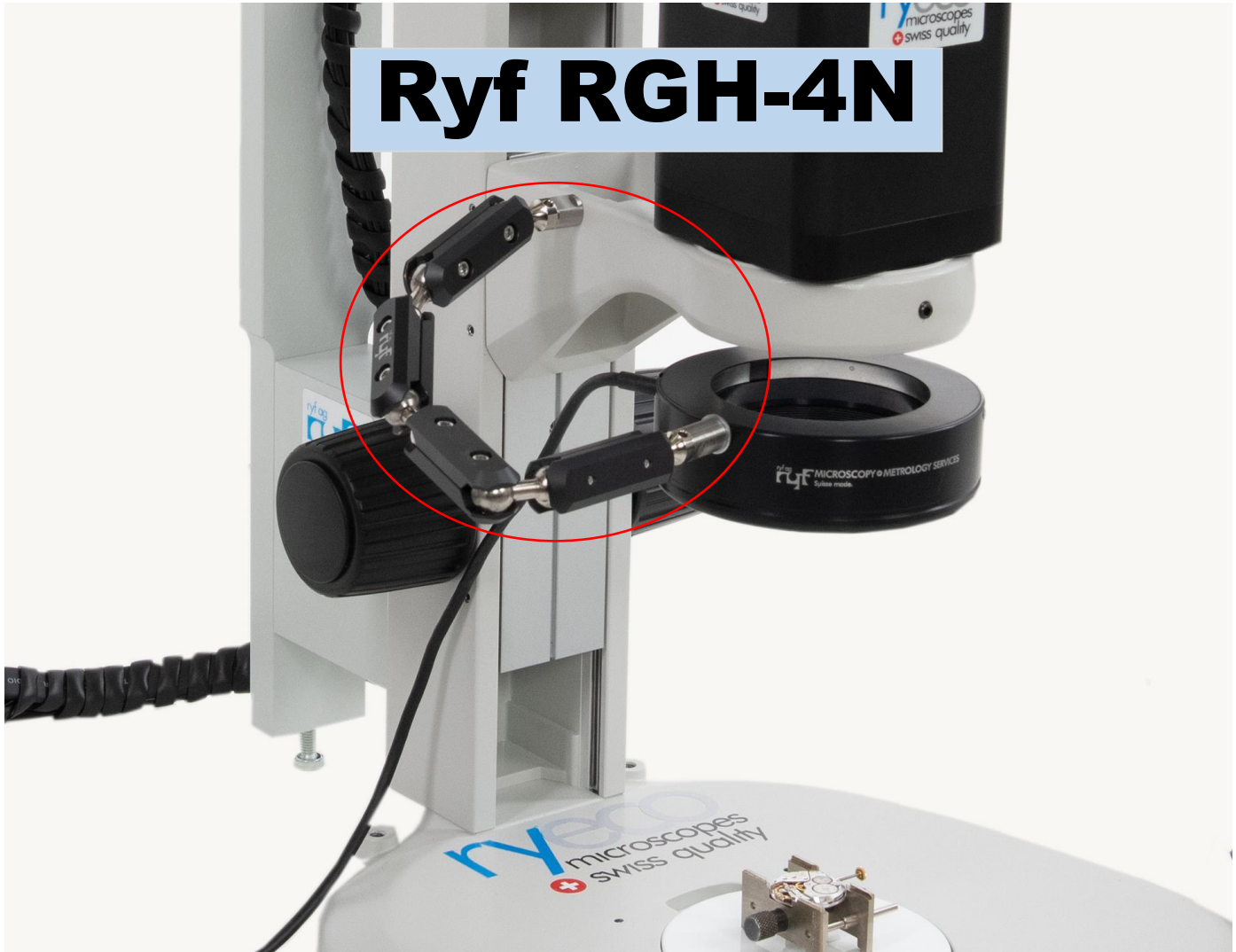



Gelenkarm Ryf RGH-4N
Bras articulé Ryf RGH-4N



 Kugelgelenke aus Chromstahl, Elemente aus Aluminium, CNC gefräst und schwarz eloxiert, alle Adapter werden aus Chromstahl hergestellt (Swiss Made).

 **Articulations sphériques en acier Inox, éléments en aluminium, fraisés CNC et anodisés noir, tous les adaptateurs sont fabriqués en acier Inox (Swiss Made).**

INOX machined ball joints machined, elements made of aluminum, CNC milled and black anodized, all adapters are made with chrome steel (Swiss Made).

Gelenkarm mit 4 Gelenken mit 2xM6 // bras articulé // articulated arm RGH-4N avec 2xM6: SAP no. 274274

Adapter (Swiss Made):

No. 600039.12 (M5 - NKL, Nikon CP-S Stativ/ *statif* / stereo stand)

No. 600039.17 (M4 – Ryf RL4, LED Photonic, Schott LED klein/ *petit* /small)

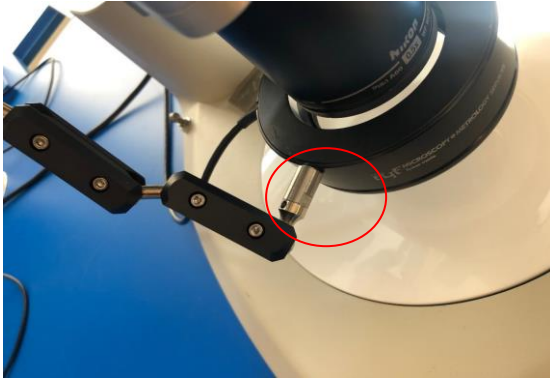
No. 600039.25 (M4 – Schott LED (gross/doppelreihe / *grande/ double* / big version)

No. 274176.M6 (Fuss mit M6 zu Gehäuse: / *ped avec M6 pour boitier du* / foot w/M6 for the housing: NKL18 / NKL12c)

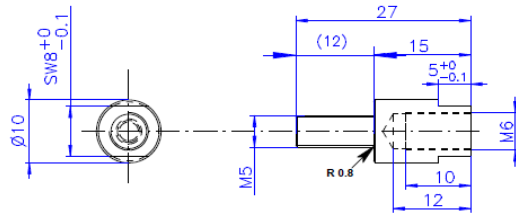
No. 600039 Adapter M5 zu M6 (Innen Gewinde) / *Adaptateur M5 vers M6 (femelle)* /Adapter M5 to M6 (male thread)

(Es werden immer pro Gelenkarm zwei Adapter benötigt // **deux adaptateurs sont toujours nécessaires par bras articulé**
// Two adapters are always required per articulated arm)

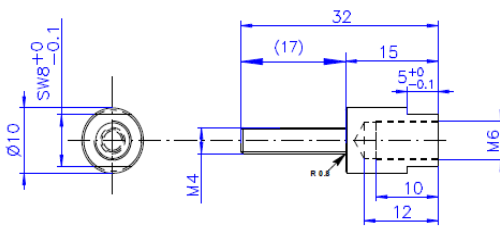
Gelenkarm Ryf RGH-4N
Bras articulé Ryf RGH-4N



No. 600039.12



No. 600039.17



No. 600039.25

