

# Stamped Sheet Metal Parts

*Stamped and Fine blanked Parts for Automotive-,  
watchmaking, Medical devices and industrial*

24 November 2020

*Realized with Nikon Measuring Mikrosscopes  
MM200, MM400, MM800 and Nexiv CNC Measuring*

**MICROSCOPY + METROLOGY SERVICES**  
Suisse made

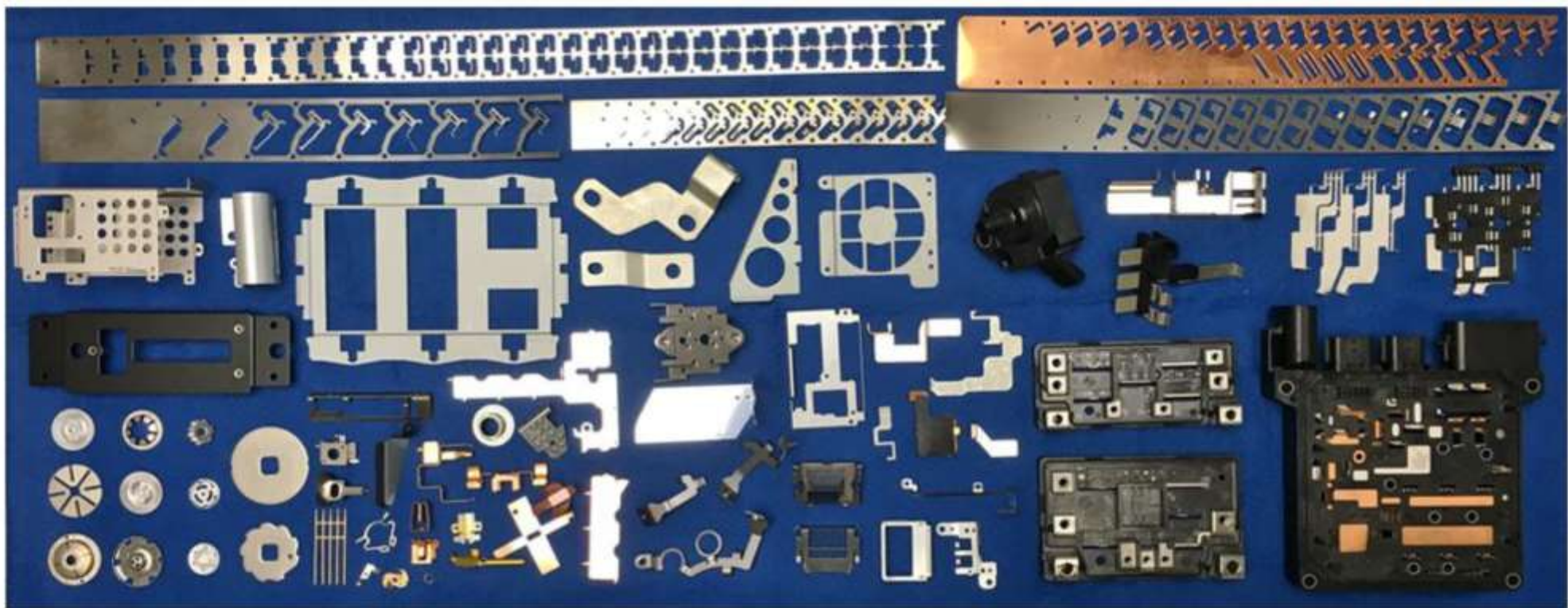


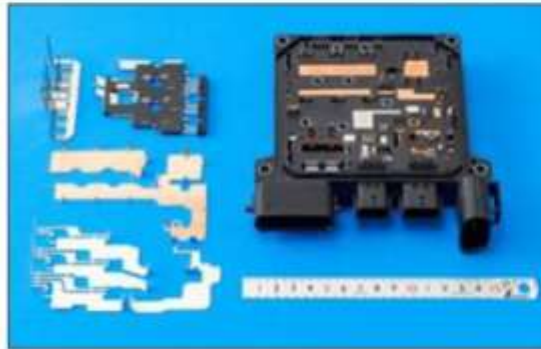
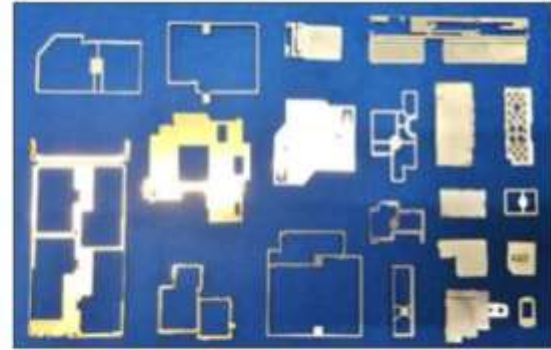
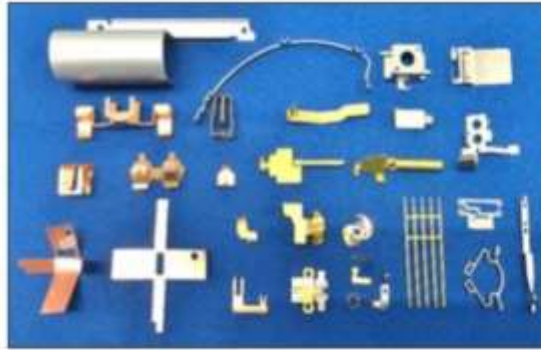
RYF AG  
Bettlachstrasse 2 · CH-2540 Grenchen  
Tel. +41 32 654 21 00  
ryfag@ryfag.ch · www.ryfag.ch

# Stamped Sheet Metal Parts to be measured by Measuring Microscopes, Video Measuring Systems

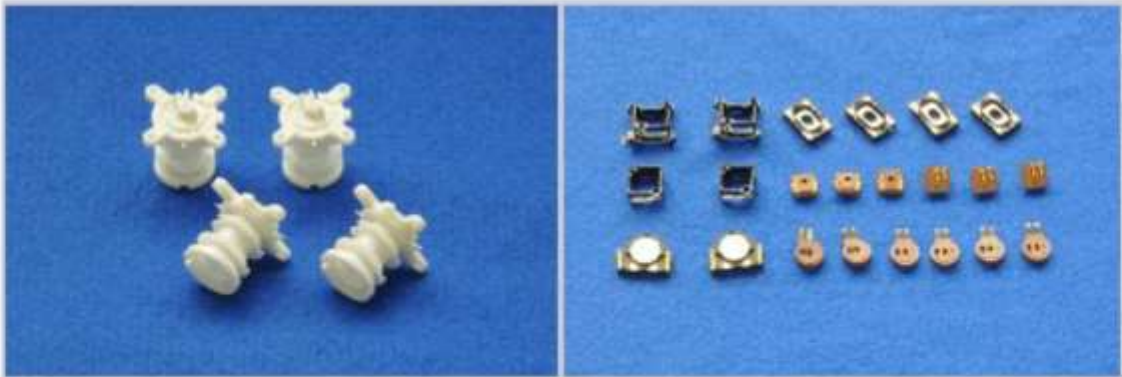
**Small and/or flat components**

**For connectors, HDD, switches, relays, motors, capacitors,  
Batteries, etc.**

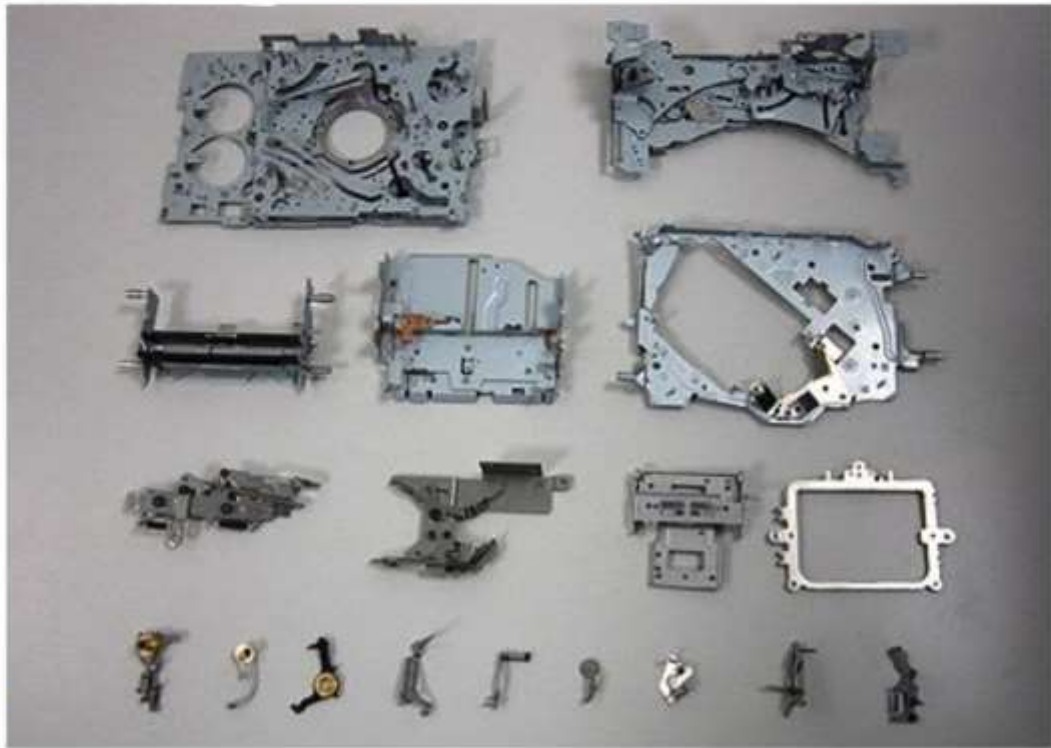




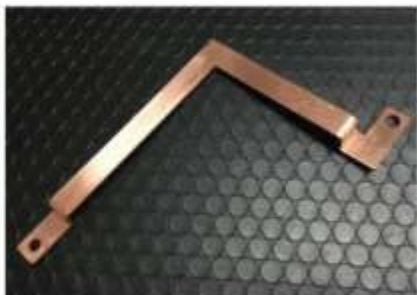










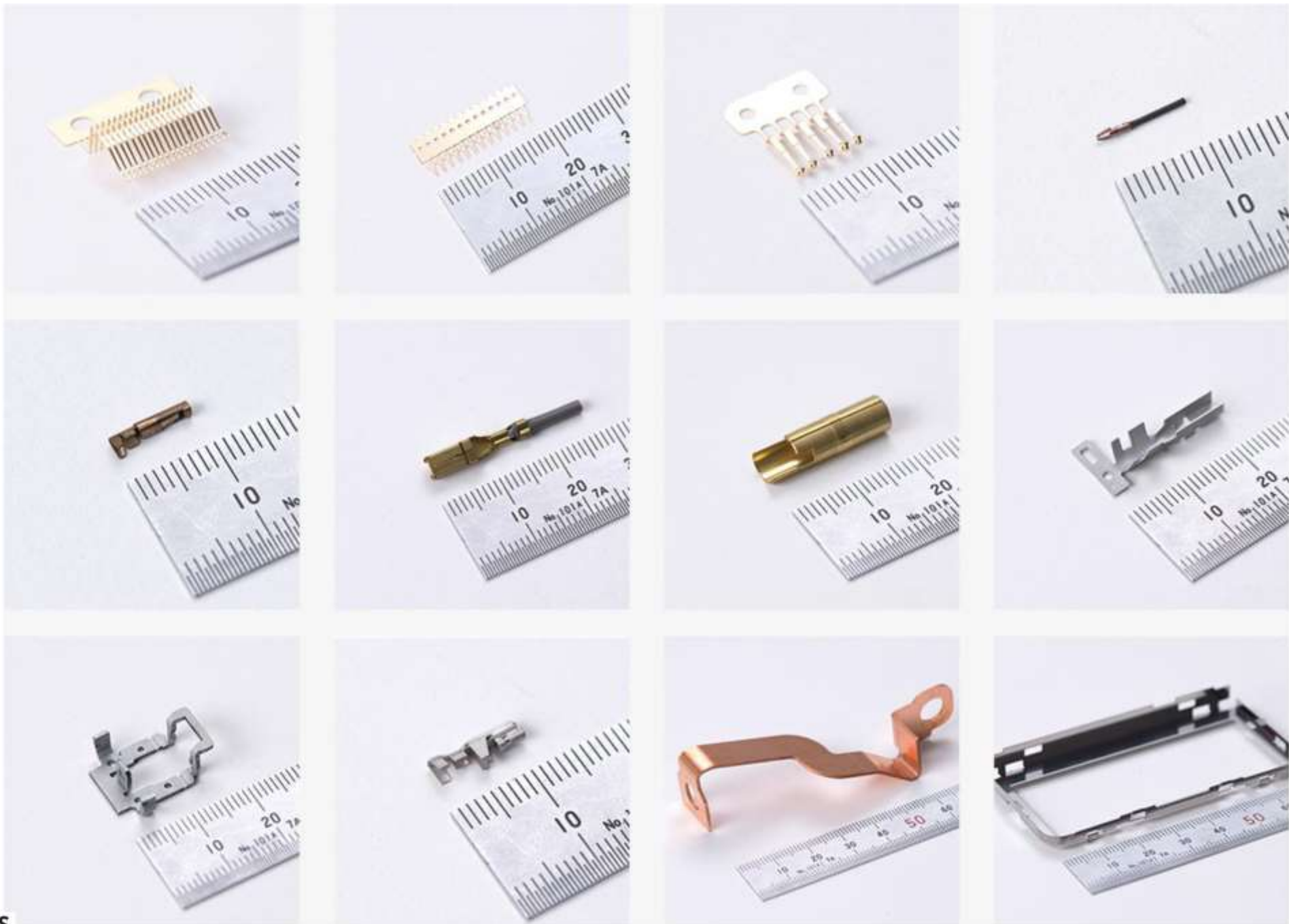




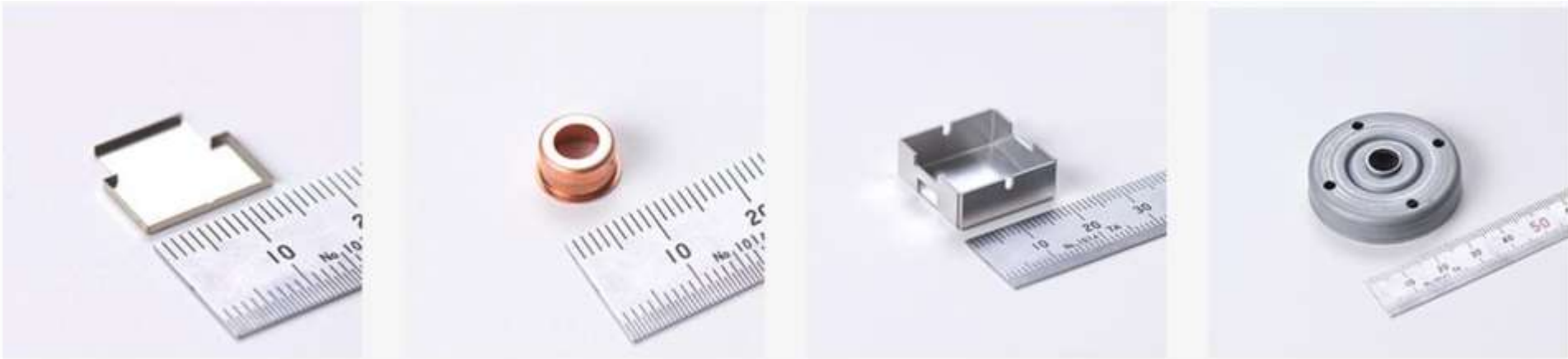


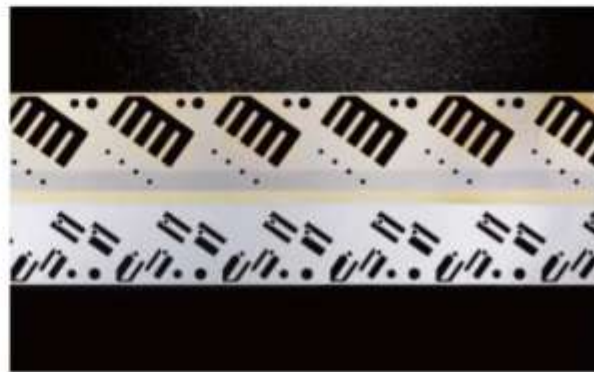






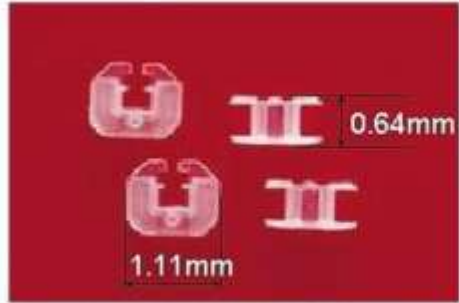




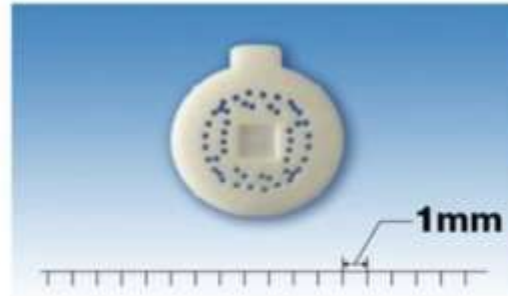
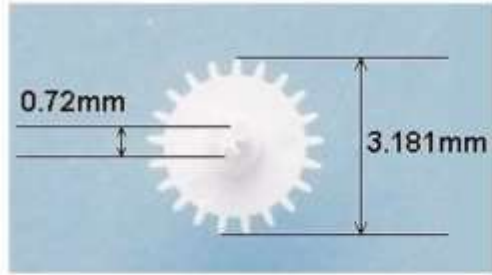




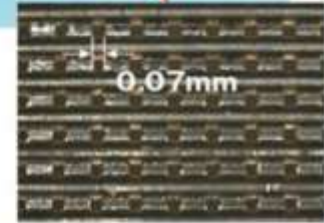




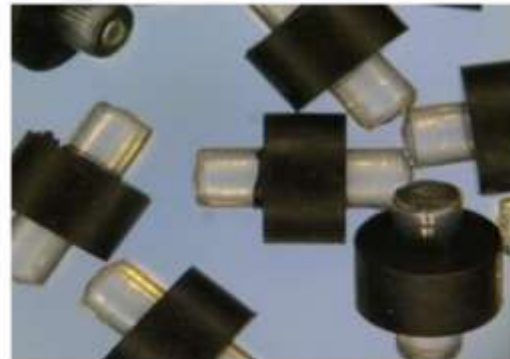
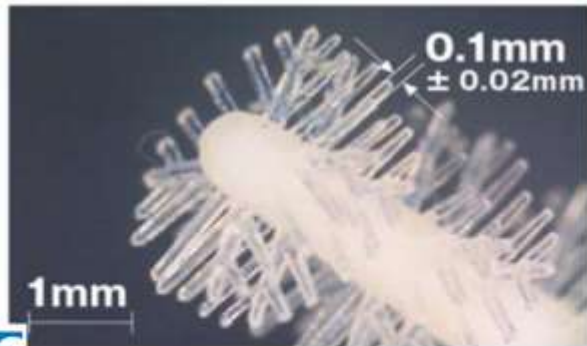
Dimensions = 1.11 x 0.96 x 0.64 mm



Mesh hole size = 0.07 x 0.07mm

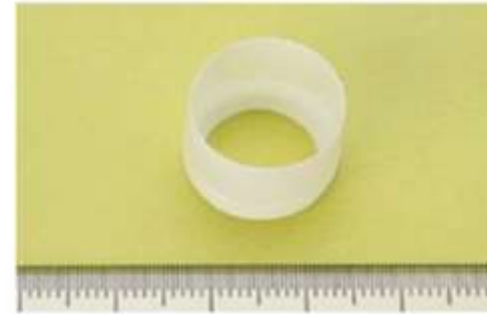
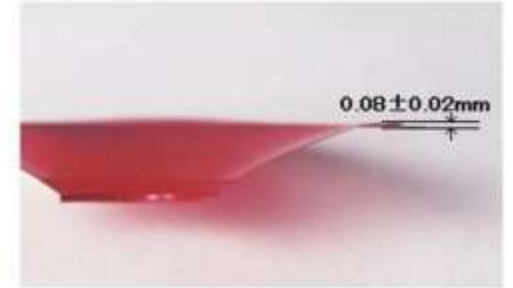


### Microfluidics plate



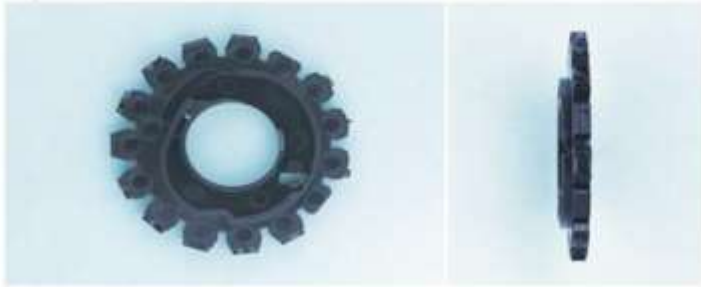
Ultra-thin wall injection

High precision plastic gears





Multi direction coring

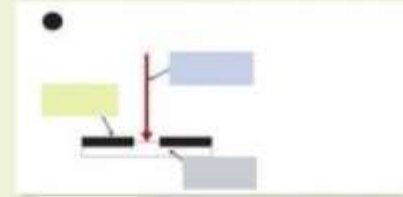




Silicone overmolding



Printing / Laser-marking



## Laser metal sintering

### Laser metal sintering

#### ★ What is Laser Metal Sintering?

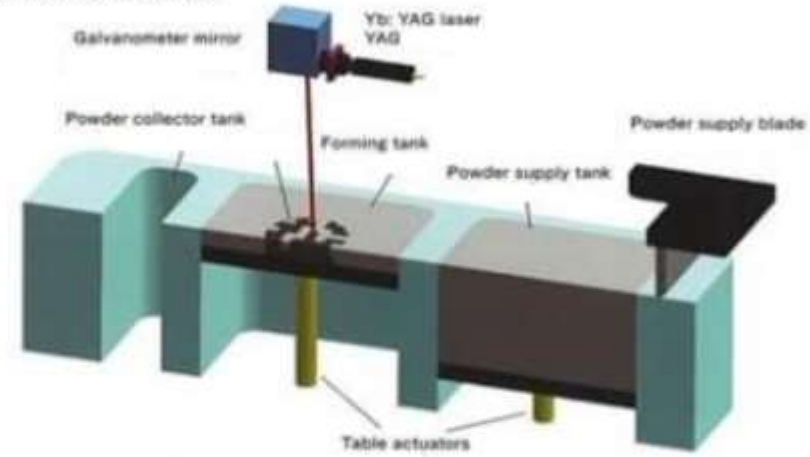
It is a process where metal powder particles are fused selectively by a high power scanning laser beam, and solidify in successive layers, generating a tridimensional shape.



Laser metal sintering machine

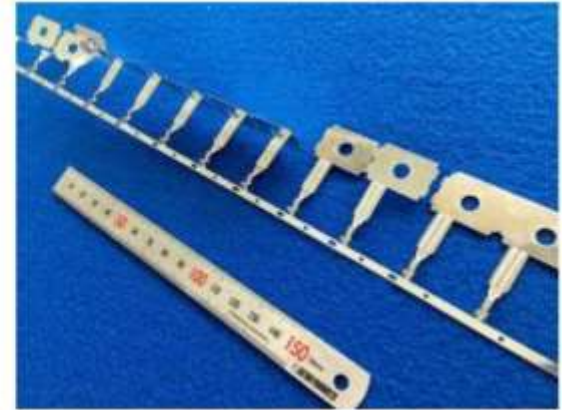
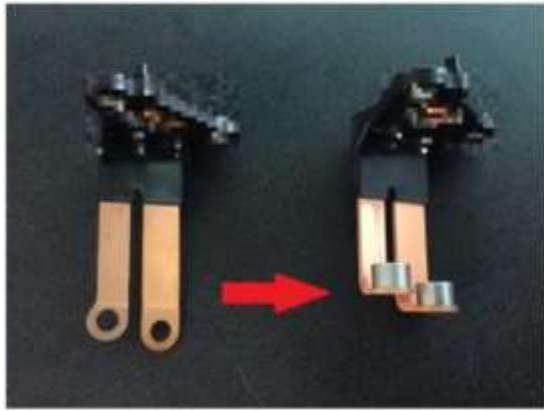


Peripheral equipment

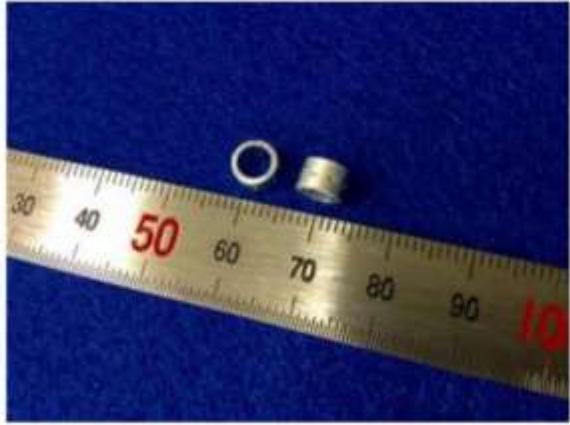


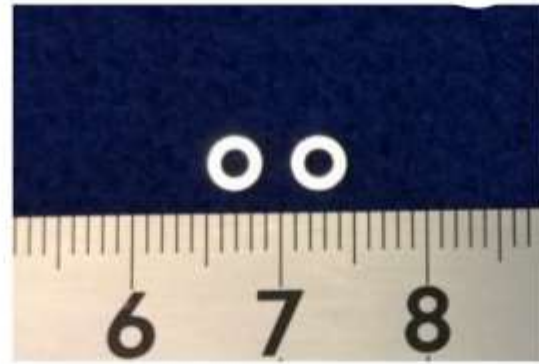
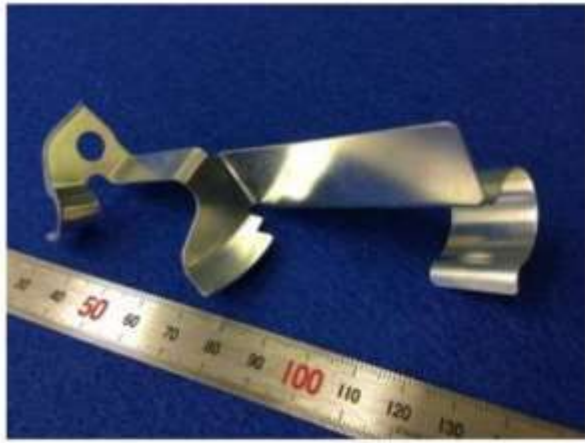
3D Model of cooling channels











1



2



3



4



5



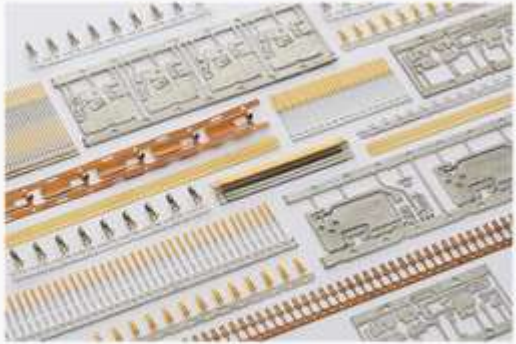
6

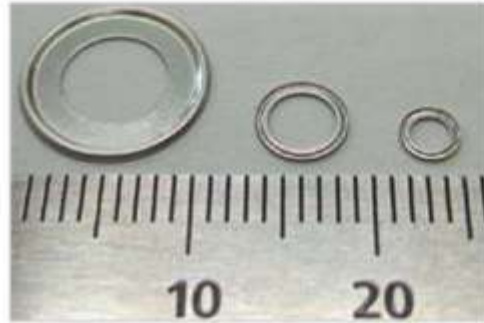


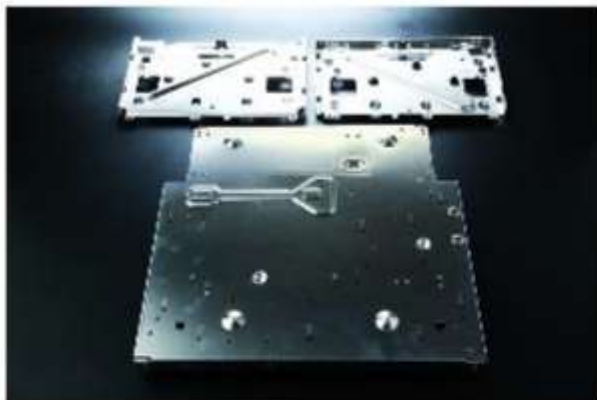
7





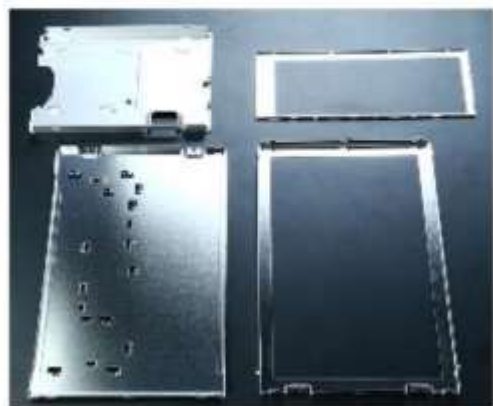
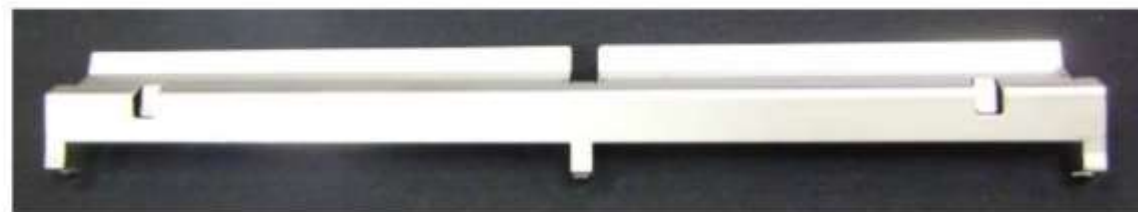






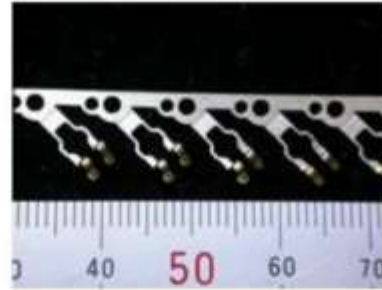
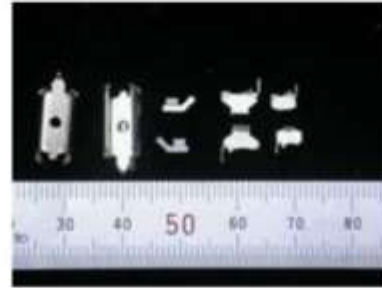


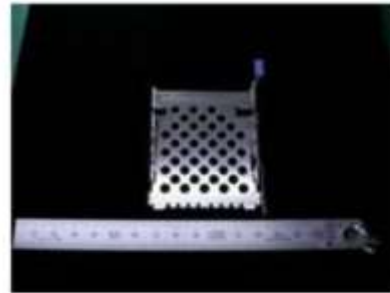
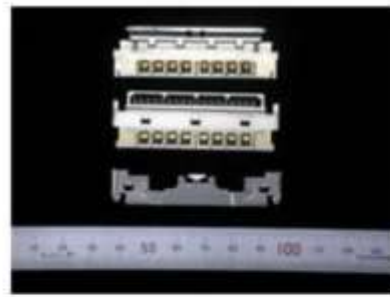
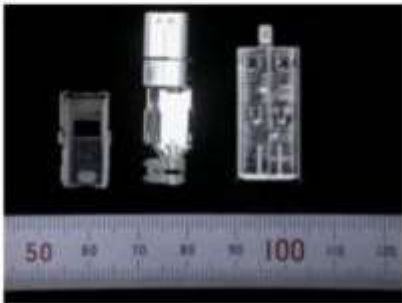
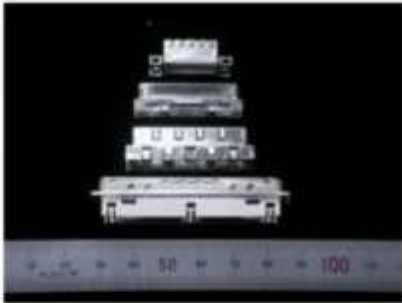
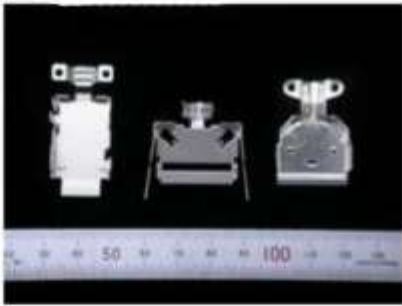


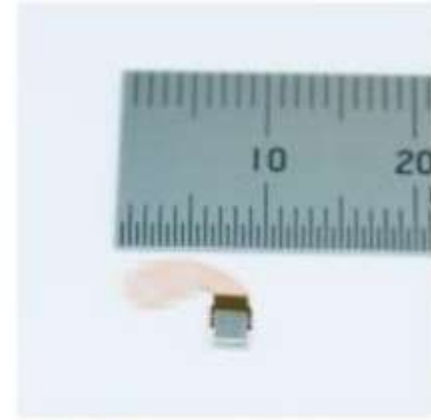




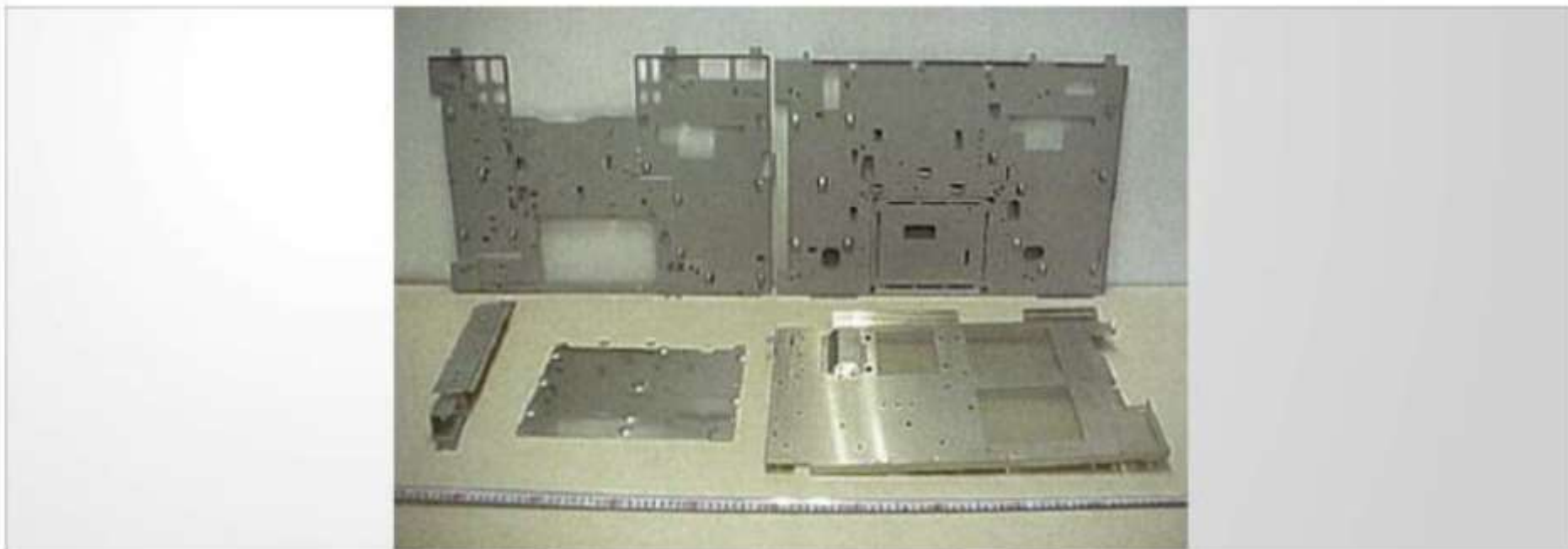




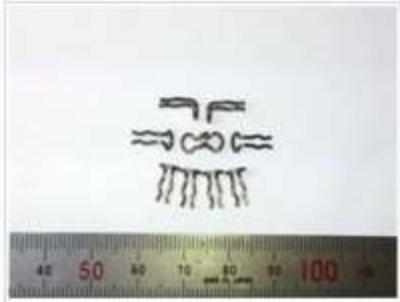
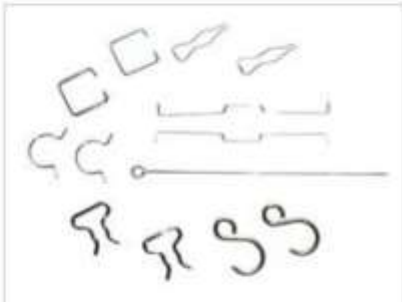






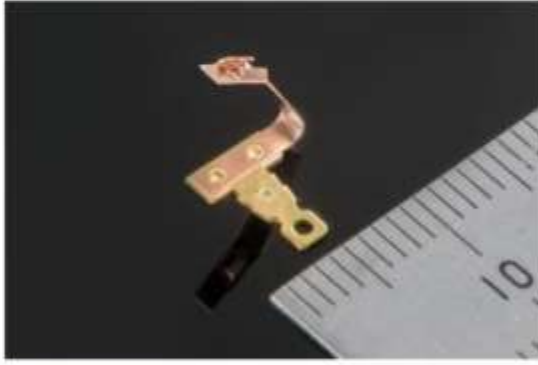
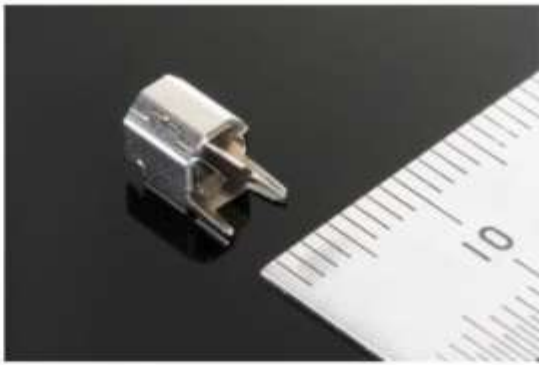


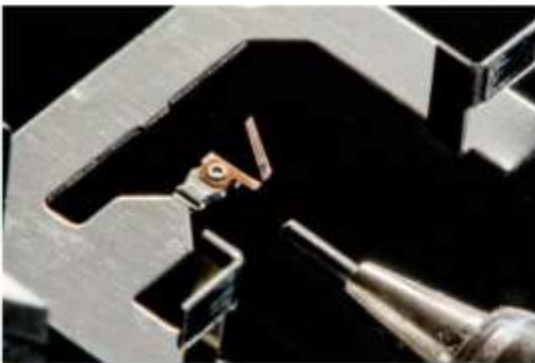




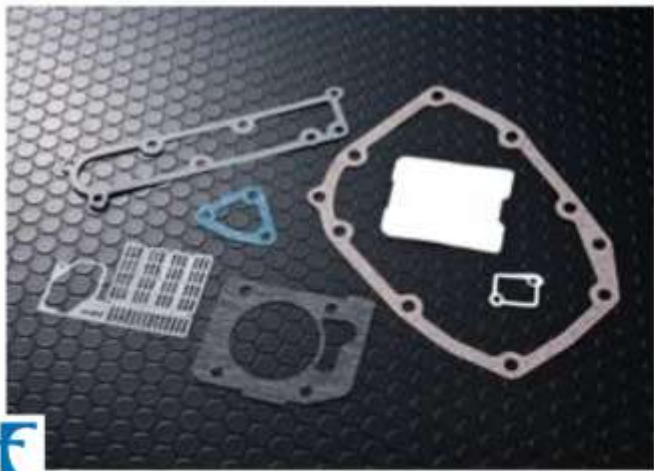
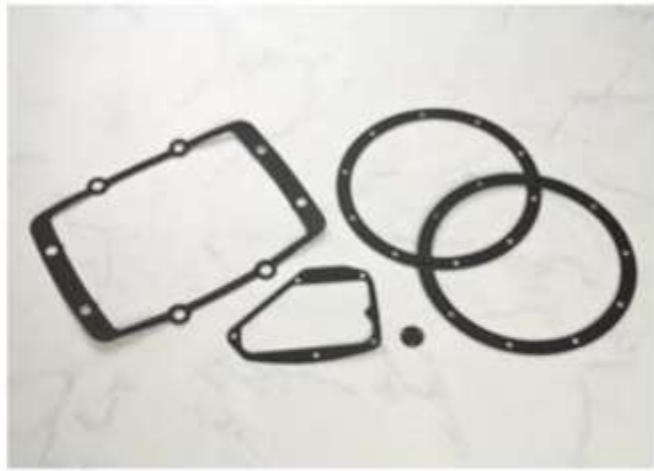












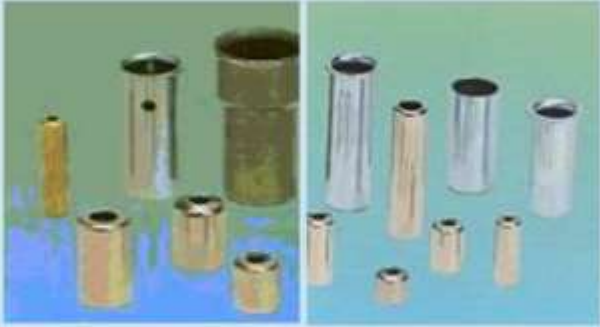


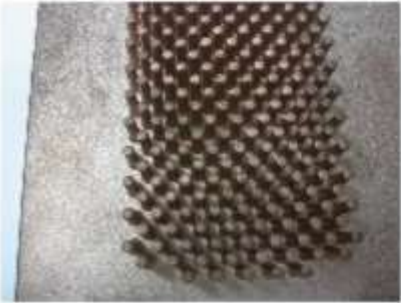
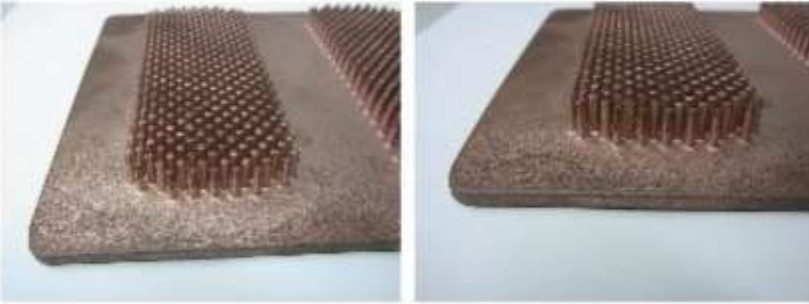
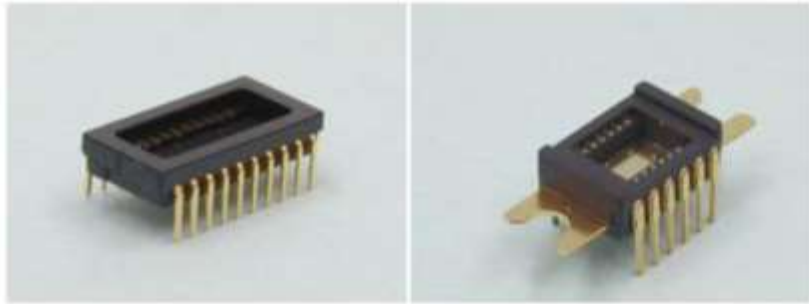
Product





Product

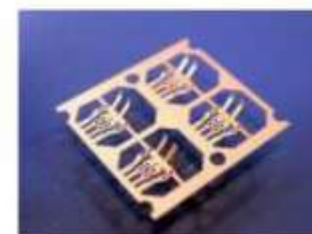
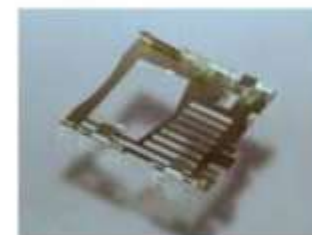


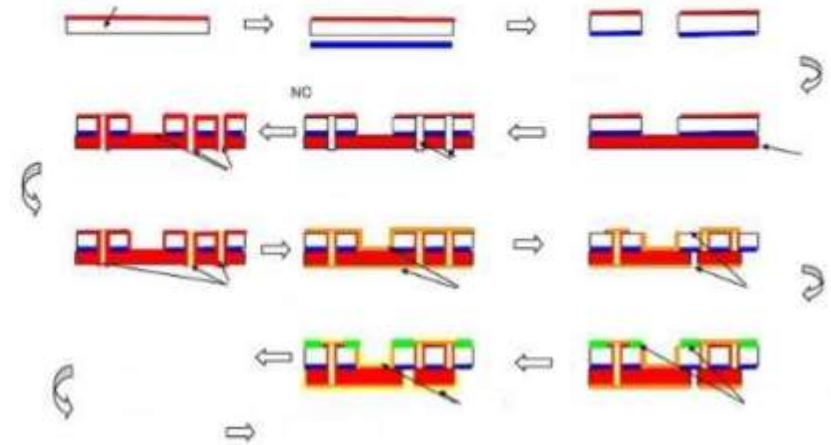
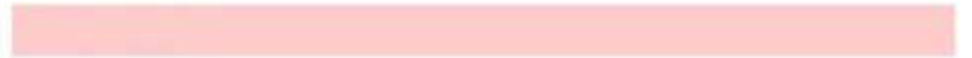
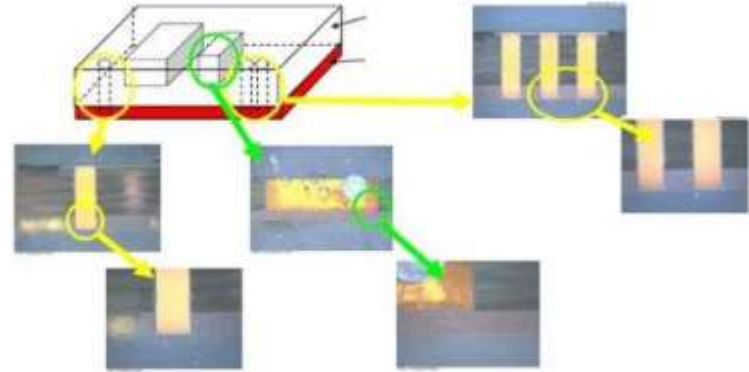
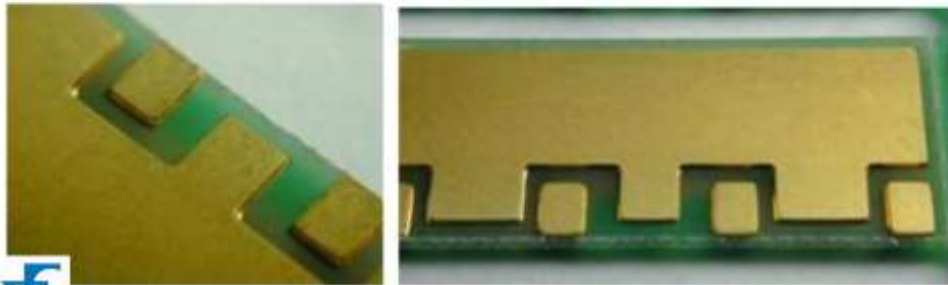
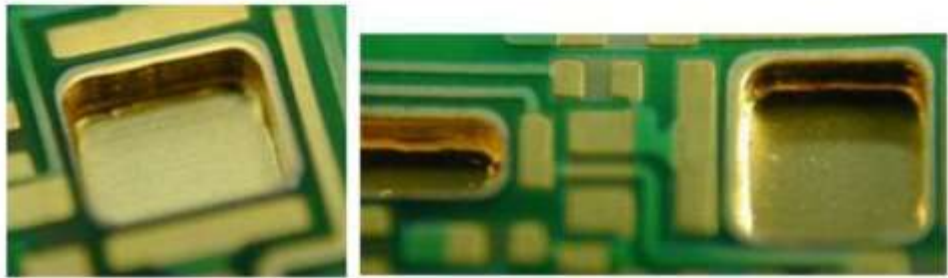
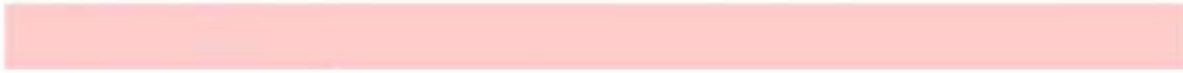


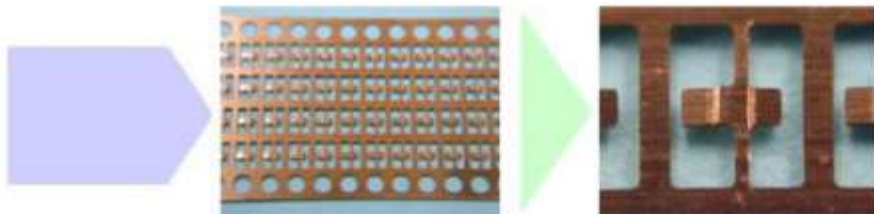
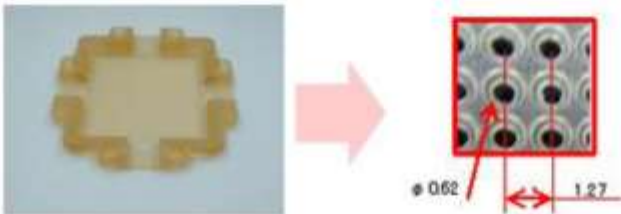
※銅材料を2,000トプレスにて加工



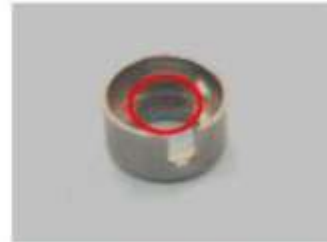
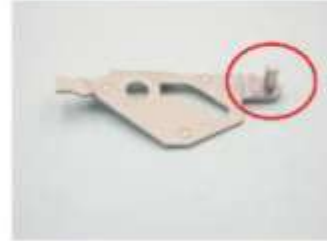
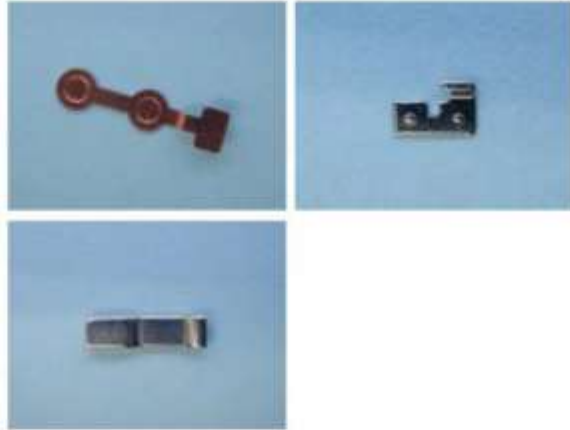


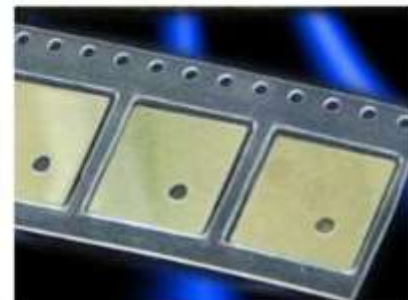
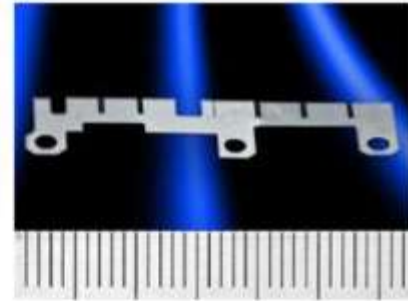
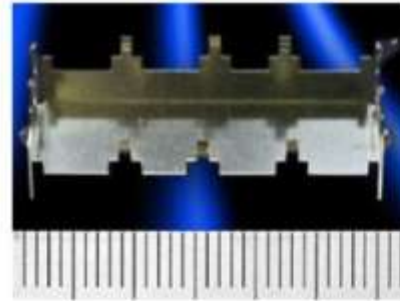
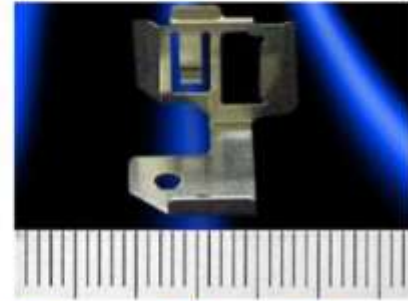
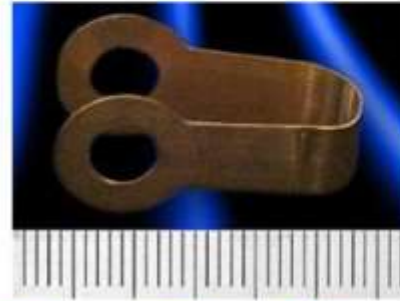
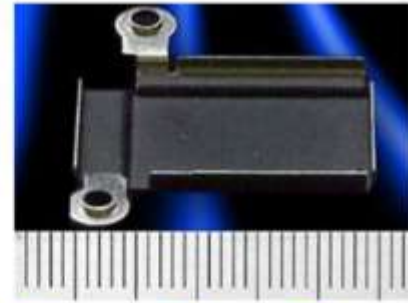
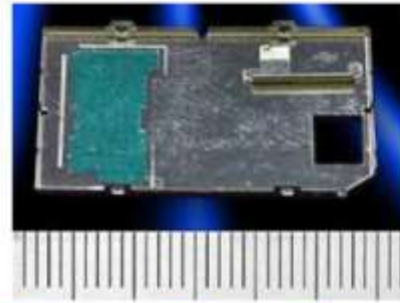
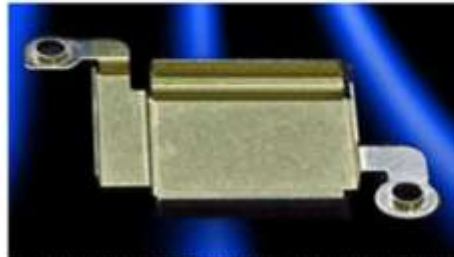
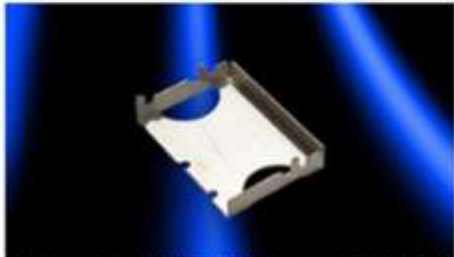
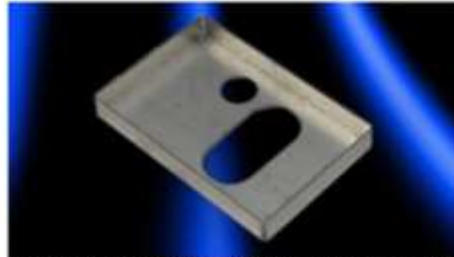
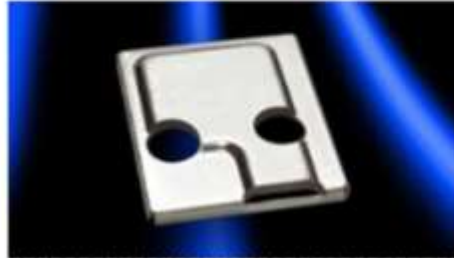


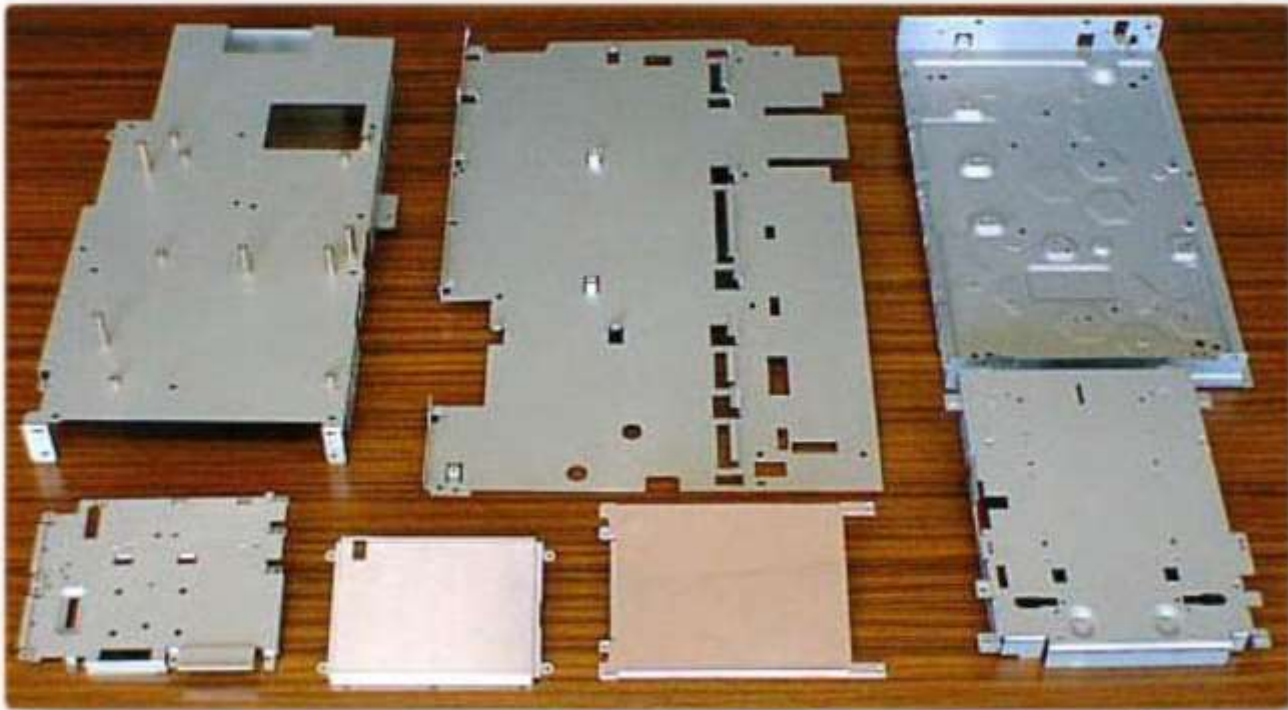








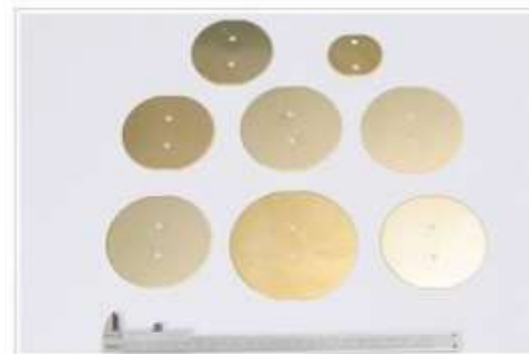


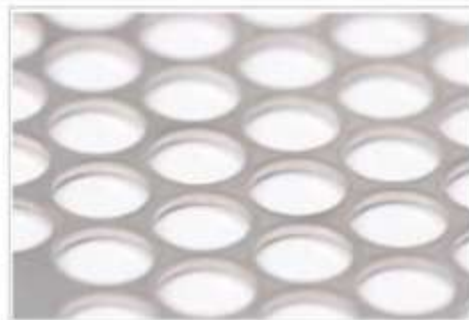




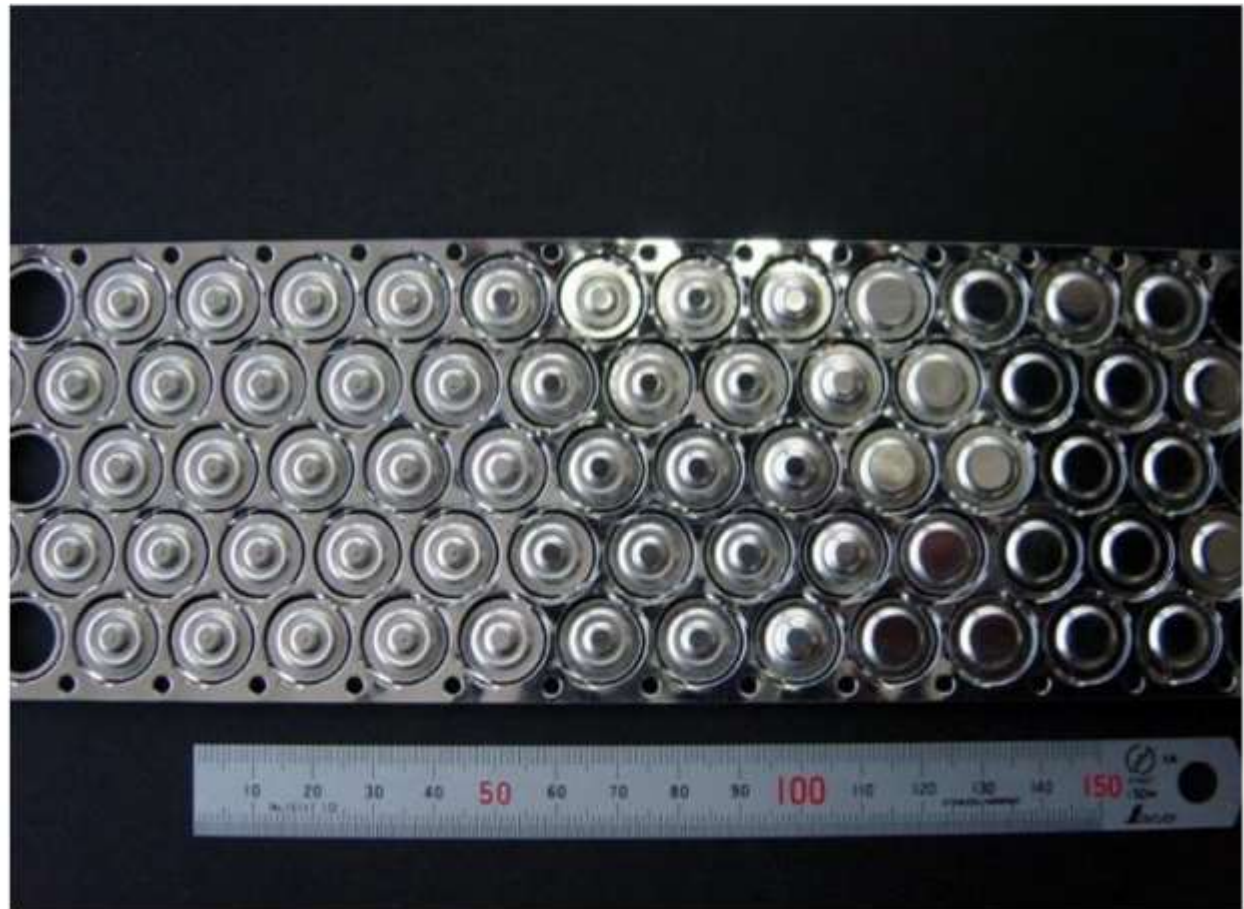








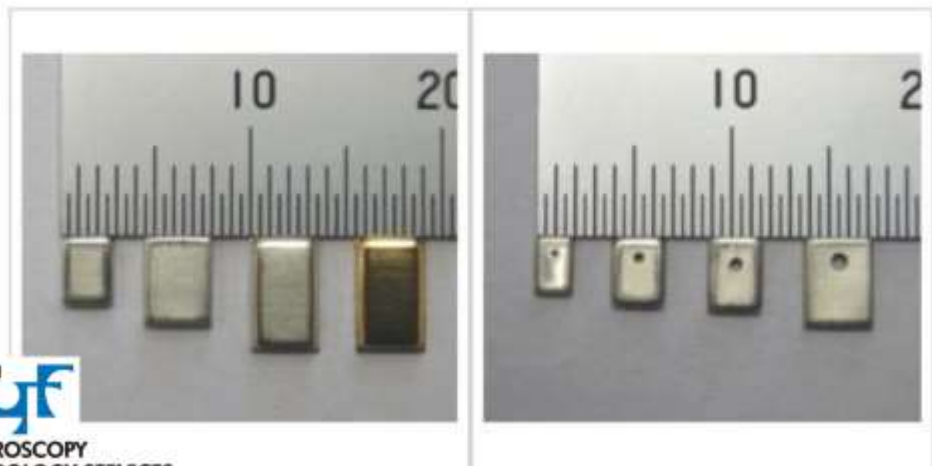
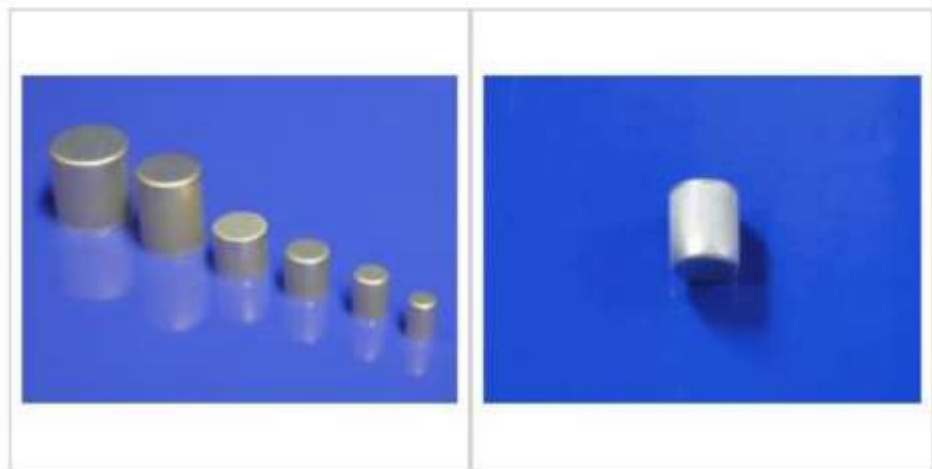


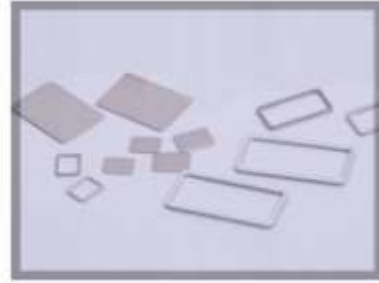




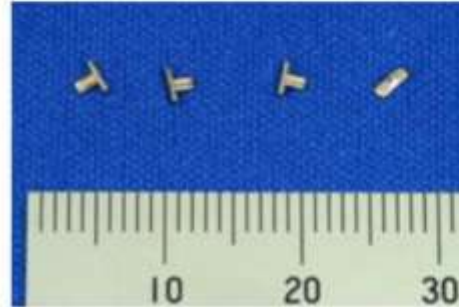
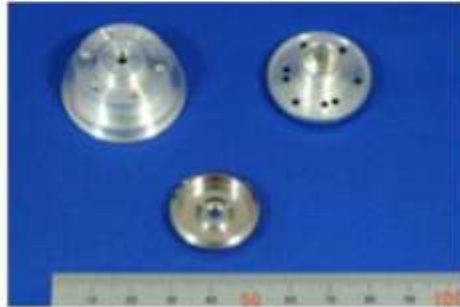
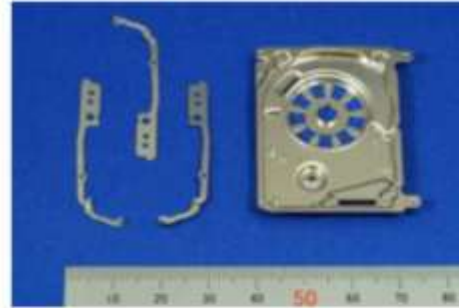


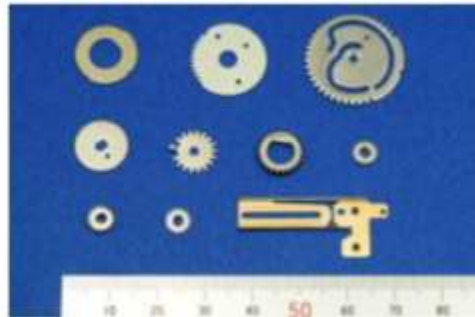
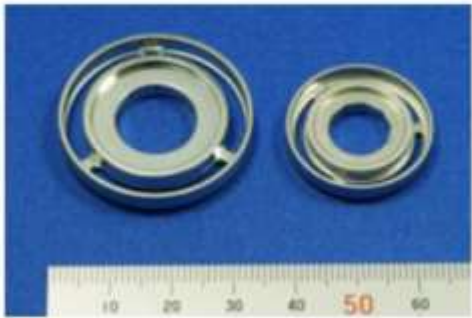
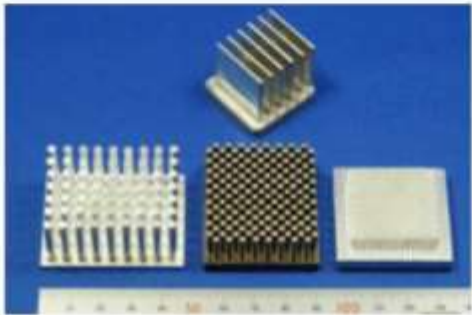
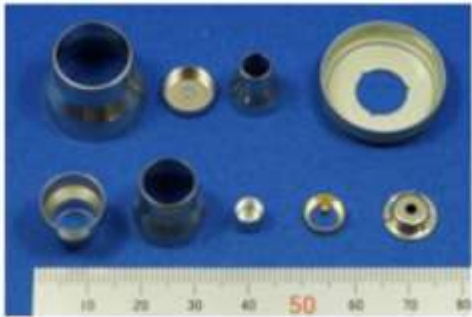


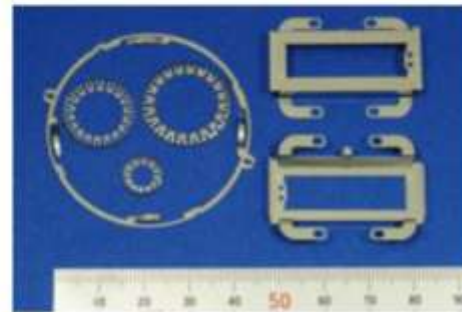
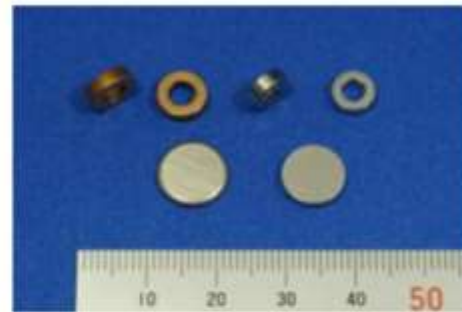
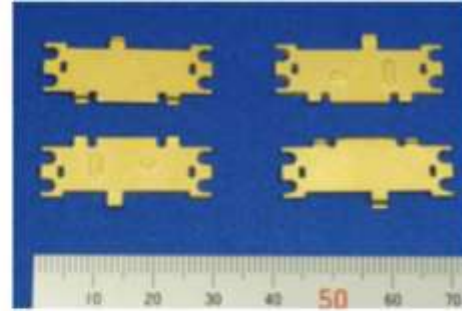
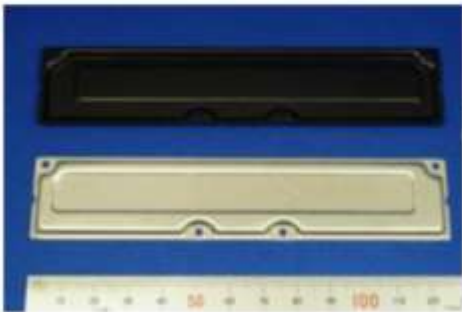
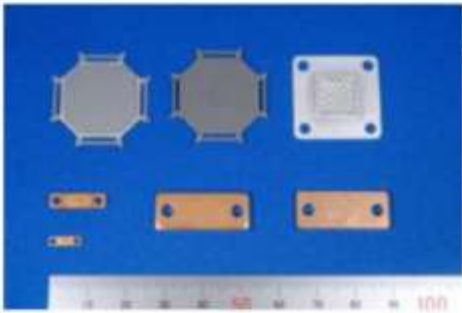
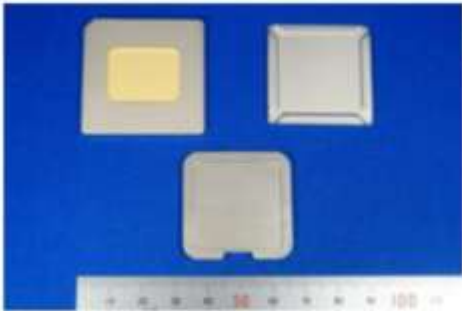


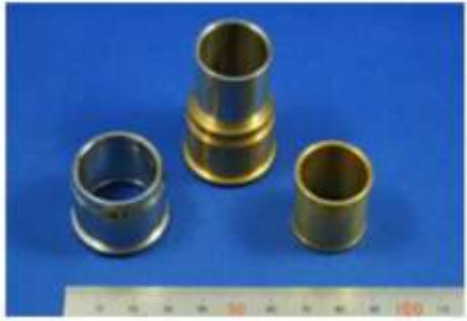
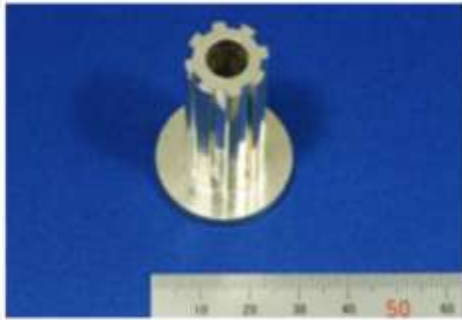
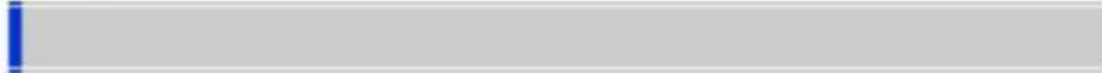
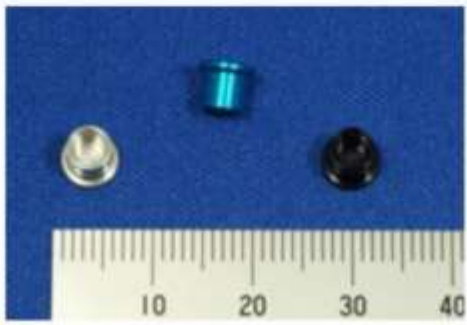
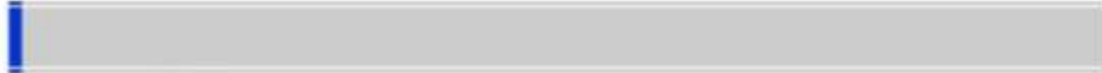




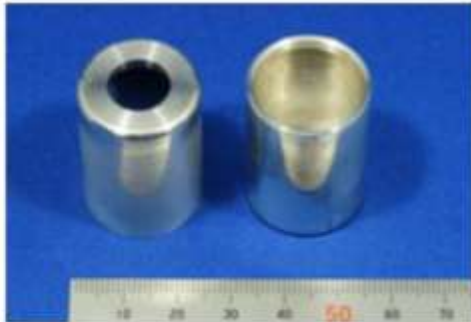
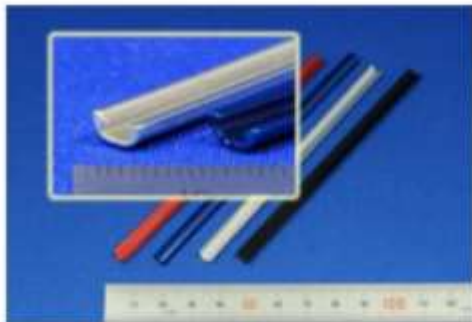
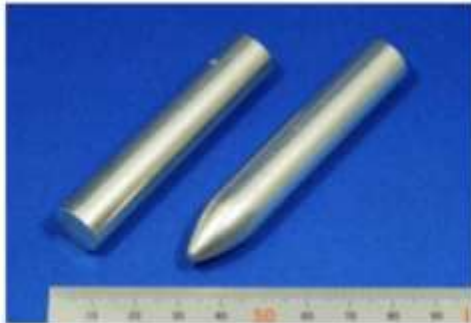
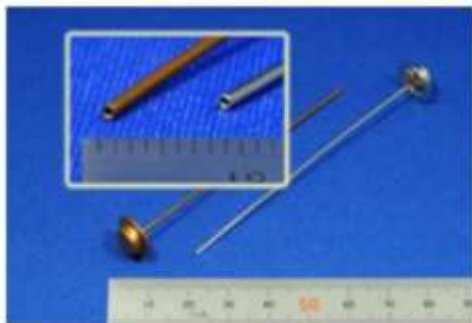


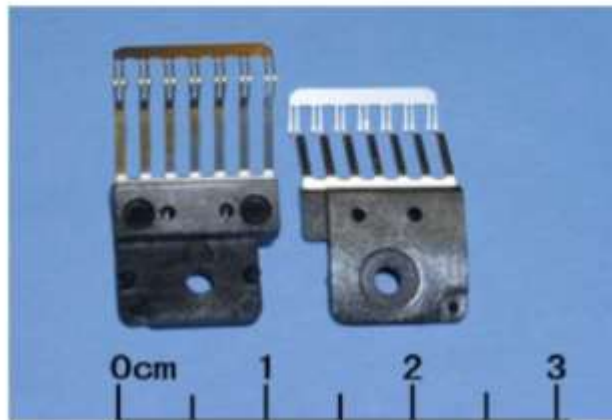
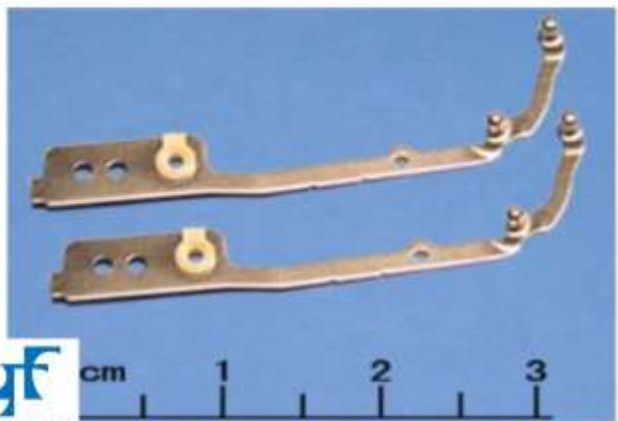
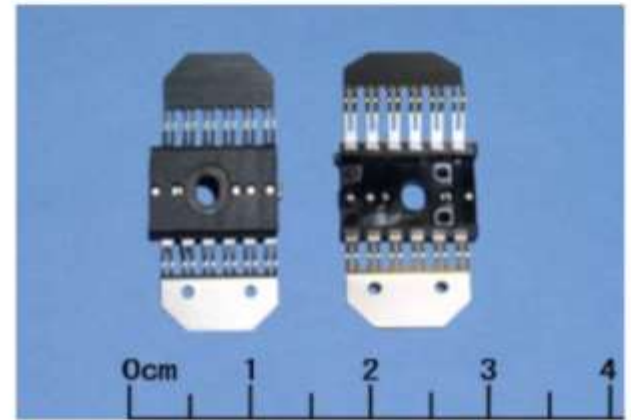


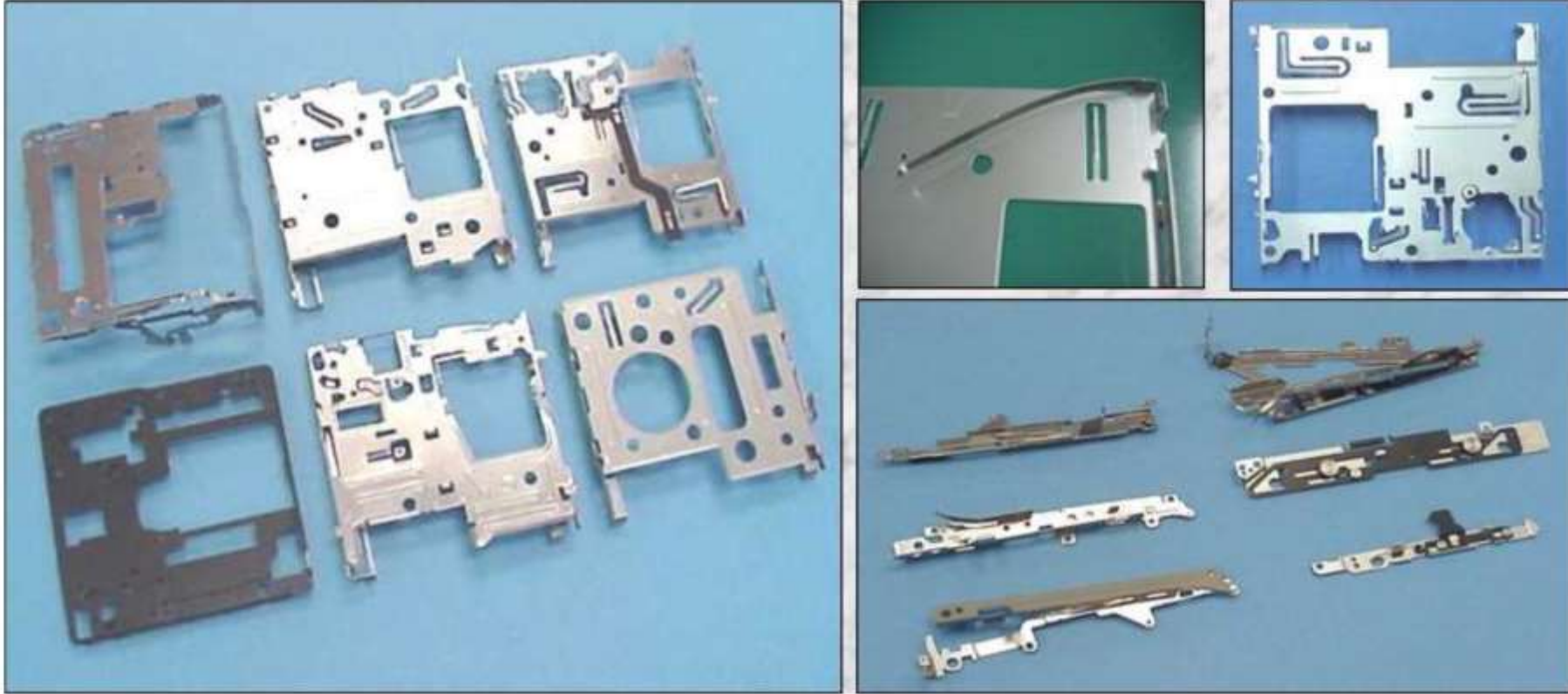












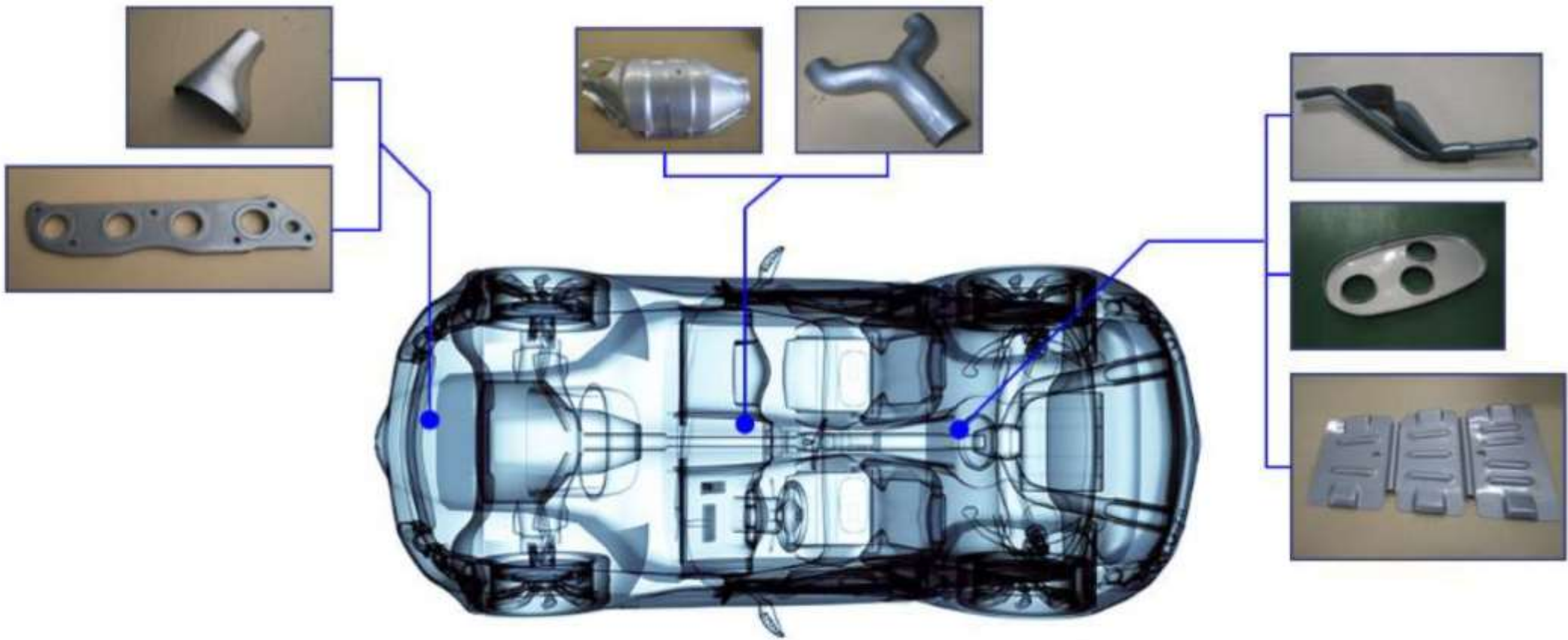


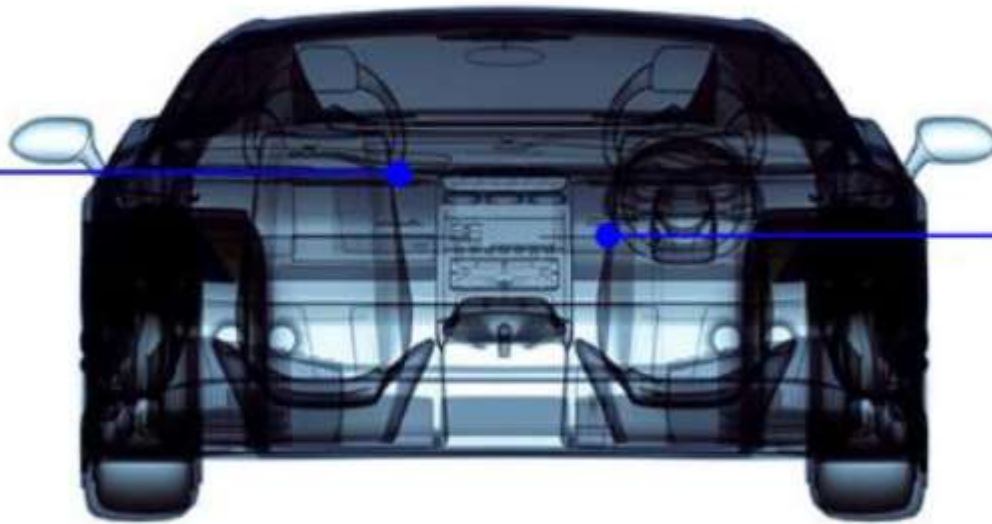




Stamped Sheet Metal Parts to be measured by  
3D CMM ,  
Laser Scanner + Arm or 3D CMM

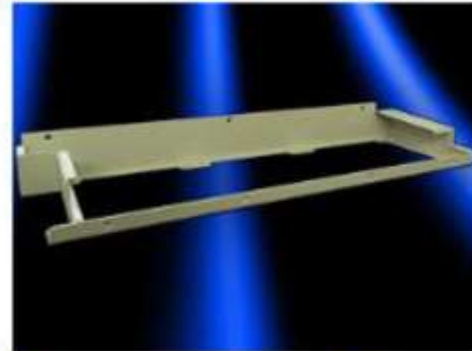
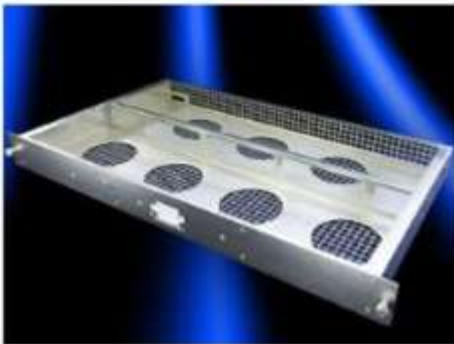
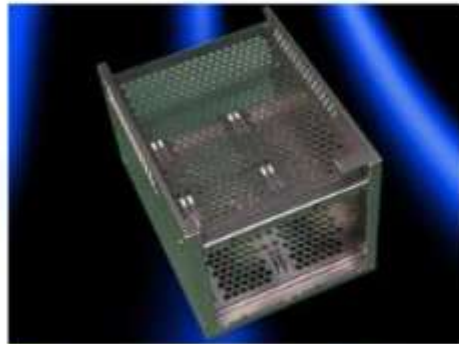
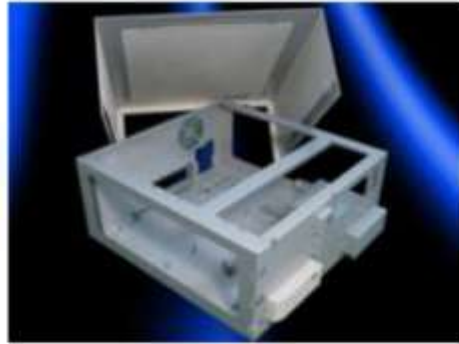
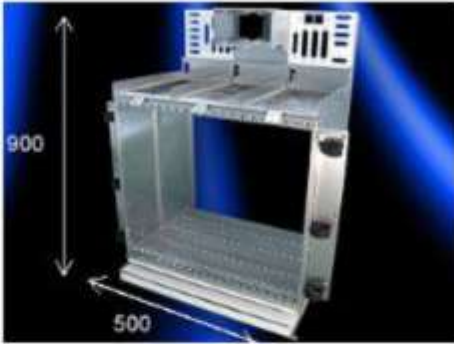
**Big and/or 3D shaped components  
For cars, motorcycles, etc.**















◆ PLATE BAFFLE



◆ STAY LEXH MNFLD



◆ PIPE COMP HEATER



◆ HAND BRAKE



◆ FOOT PARKING



◆ STAY COMP ACTUATOR



◆ BRKT MODULATOR



◆ PLATE P/S H/TBAF



◆ ARM REAR BRAKE



◆ PARKING BRAKE



◆ BRKT OIL TANK



◆ P-SEAT











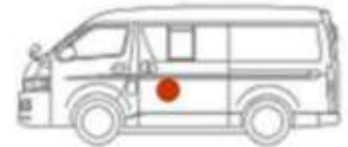
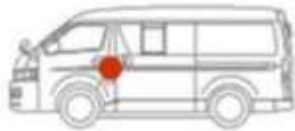
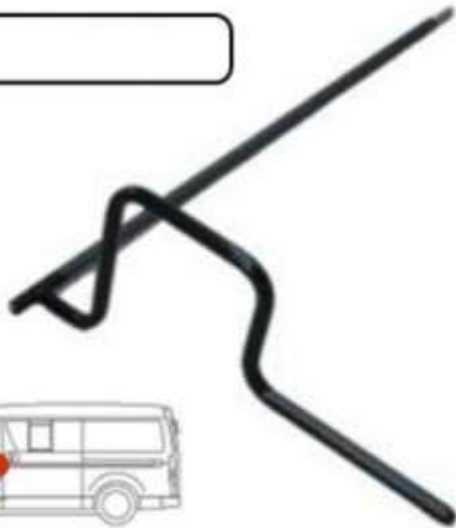
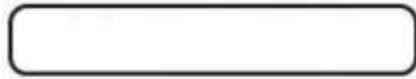
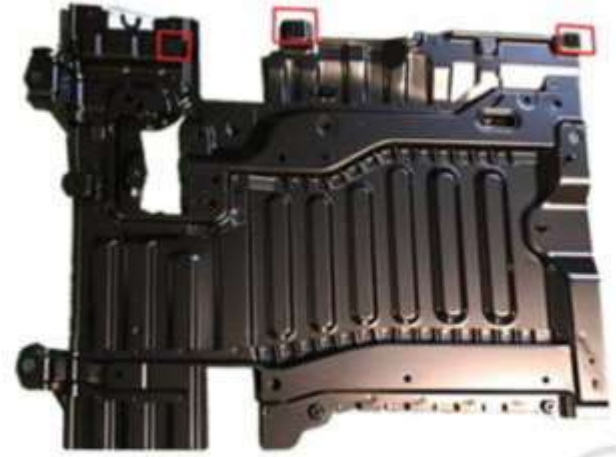




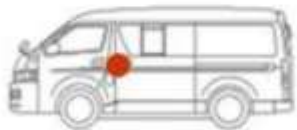




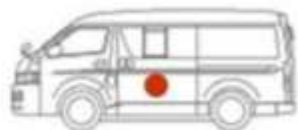




[Empty label box]



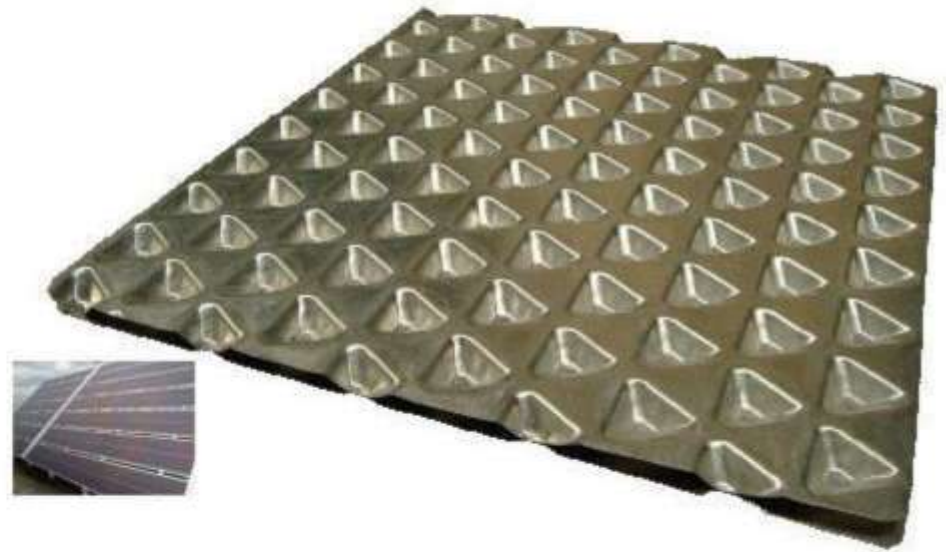
[Empty label box]



[Empty label box]





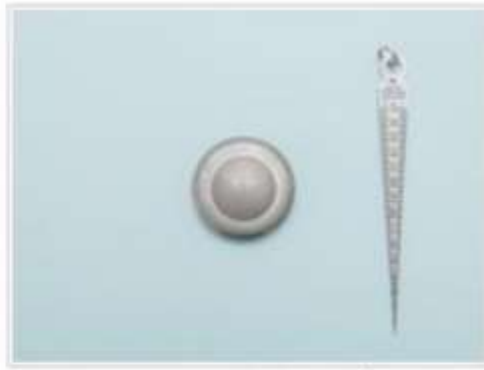
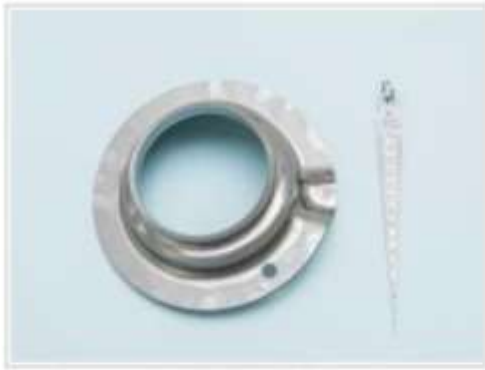
















End

**MICROSCOPY + METROLOGY SERVICES**

Suisse made



RYF AG  
Bettlachstrasse 2  
CH-2540 Grenchen  
Tel. +41 32 654 21 00  
ryfag@ryfag.ch · www.ryfag.ch

RYF SA Succursale  
Route de Genève 9c  
CH-1291 Commugny  
Tel +41 22 776 82 28  
ryfag@ryfag.ch · www.ryfag.ch

RYF AG (Zürich)  
Bahnhofplatz 17  
CH-8400 Winterthur  
Tel +41 52 560 22 25  
ryfag@ryfag.ch · www.ryfag.ch