

Machine Vision Microscope

IM-series digital microscope

- for measuring instruments, analysis systems or bio-imaging systems
- camera with integrated optics + light
- brightfield + darkfield in one unit
- plug and play with measurement software
- robust, one wire, aluminium housing
- USB 3.1 with Sony IMX pregius sensor
- long WD, high NA objectives for highest contrast + resolution

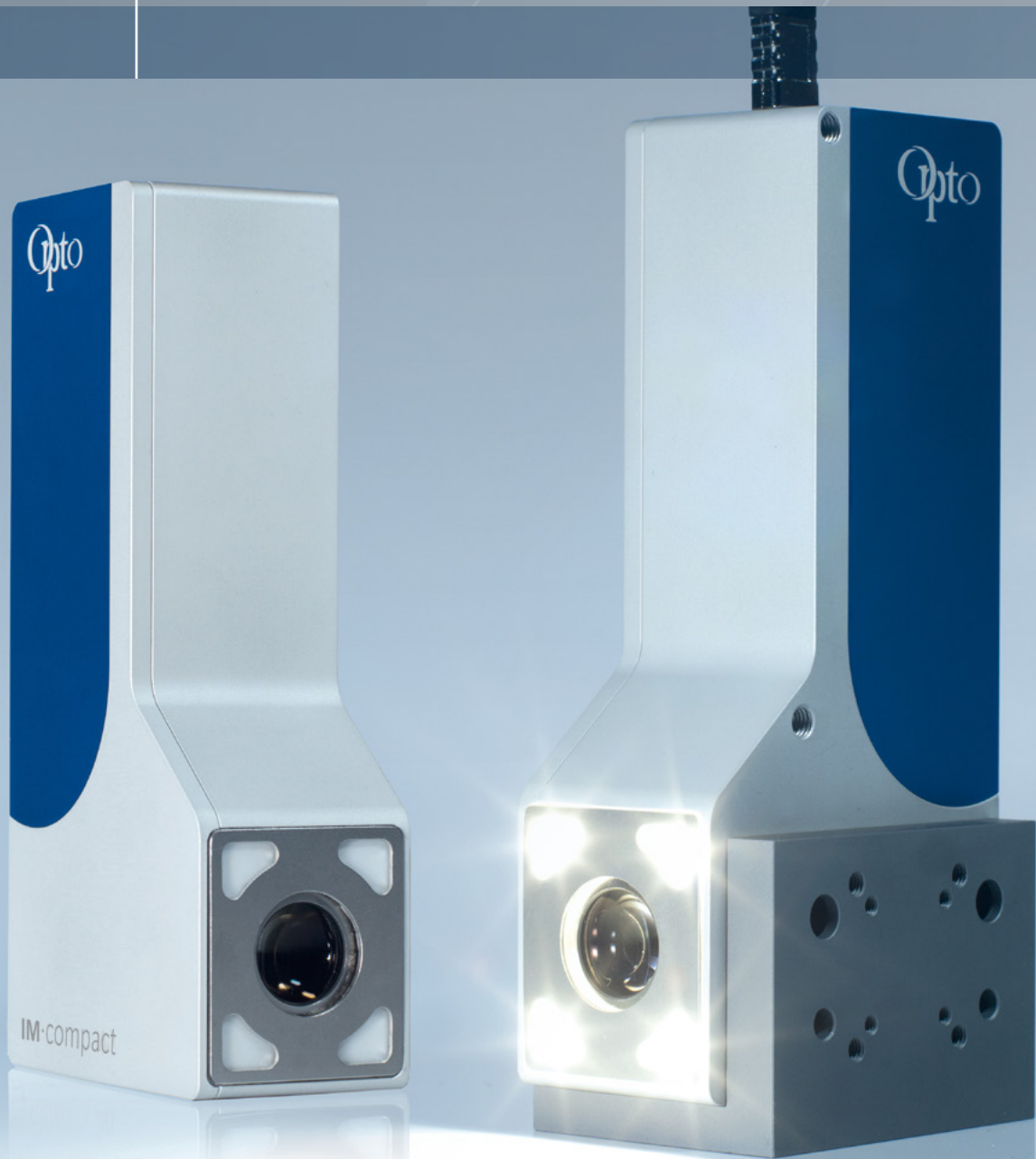


IM-compact



Wir machen Qualität sichtbar
Nous rendons la qualité visible
Making quality visible

Designed, manufactured and tested in Germany to the highest optical standards.



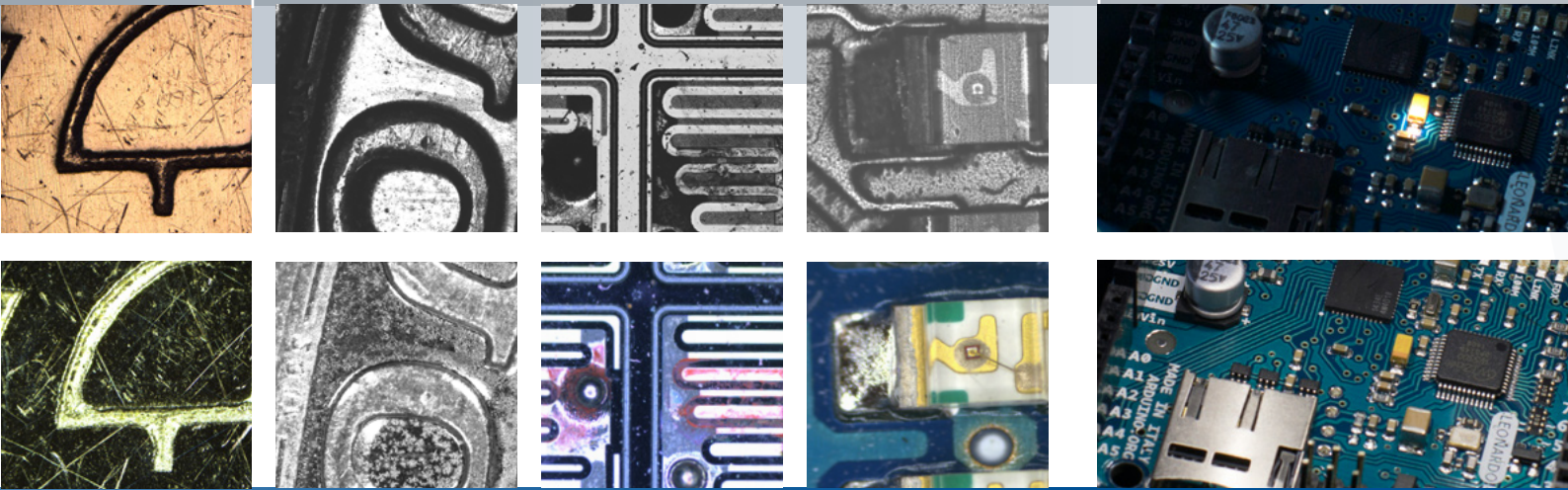
original product size
shown with optional mounting bracket



One Unit
One Wire
Plug and Play

top row: brightfield / coaxial LED
bottom row: darkfield / ringlight LED

alternating operation
ring light / coax light



Digital Microscope

The Machine Vision Microscope is part of the Imaging Module family in the 90° IM·compact M design and sturdy aluminum housing, with a single connection (Plug&Play). Imaging modules are cameras with integrated optics, illumination and electronics for a specific application at the same or lower price than a combination of standard components. They are not only more robust and better adapted to the application, but also ensure the same configuration when re-ordered.

A coaxial incident light illumination and a diffuse ringlight were installed in this module.

Both lights are controlled and powered via the USB 3.1 port of the integrated camera. A specially developed control electronics allows alternating operation of the two light sources. The interaction of a highly sensitive sensor and very efficient LEDs with a powerful optical system allows this compact combination.

Opto Viewer

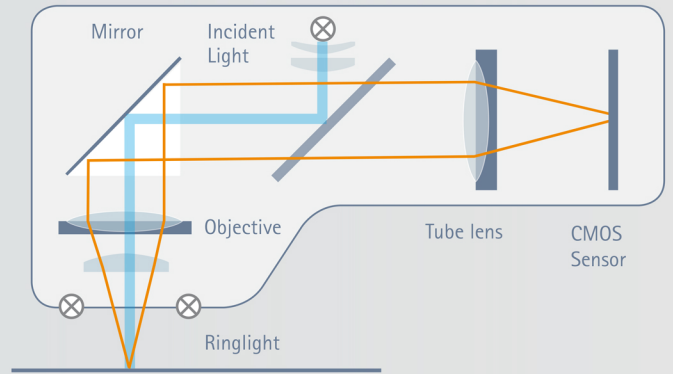
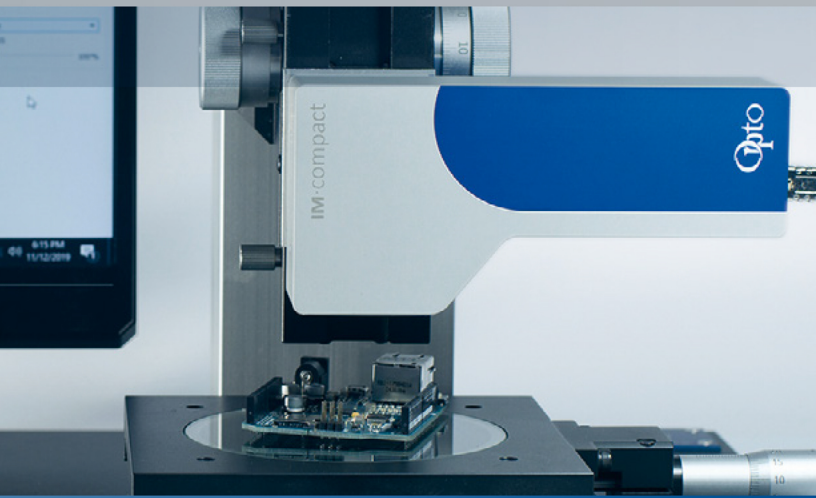
A very intuitive measurement and labeling software is integrated for stand alone applications as well as a comprehensive camera control for demanding integration tasks. Since each module is unchangeable in magnification, it is pre-calibrated at the factory and the settings are stored in its own electronics, so that measurements can be taken immediately.

For OEM-Integration of the Opto Imaging Module we offer dedected SW services for Image Analysis, design user interface and statistical data-analysis.

Image Capture with reduced Simplicity
Start | Stop | Save | Brightness



IM·series countless variations



Technical Specifications

FoV (mm)	WD (mm)	Resolution (LP/mm)	Numerical aperture (NA)	Light (LED white)	Image	Frame-rate	Sensor (Sony Pregius *)	Interface	Order-number
4,5 x 3,4	31	-	0.1	coax + ring	color	36	5.0 MP IMX264	USB 3.1	IC - 4352701UCE
4,5 x 3,4	31	270	0.1	coax + ring	monochrome	36	5.0 MP IMX264	USB 3.1	IC - 4352701UBE
3,8 x 2,8	31	-	0.1	coax + ring	color	55	3.1 MP IMX265	USB 3.1	IC - 4351701UCE
3,8 x 2,8	31	270	0.1	coax + ring	monochrome	55	3.1 MP IMX265	USB 3.1	IC - 4351701UBE
2.2 x 1.8	36	-	0.2	coax + ring	color	36	5.0 MP IMX264	USB 3.1	IC - 4352702UCE
2.2 x 1.8	36	555	0.2	coax + ring	monochrome	36	5.0 MP IMX264	USB 3.1	IC - 4352702UBE
1.8 x 1.4	36	-	0.2	coax + ring	color	55	3.1 MP IMX265	USB 3.1	IC - 4351702UCE
1.8 x 1.4	36	555	0.2	coax + ring	monochrome	55	3.1 MP IMX265	USB 3.1	IC - 4351702UBE
1,8 x 1,4	13	-	0.25	coax	color	55	3.1 MP IMX265	USB 3.1	IC - 4251101UCE *
1,8 x 1,4	13	555	0.25	coax	monochrome	55	3.1 MP IMX265	USB 3.1	IC - 4251101UBE *

Dimensions: 70 x 150 x 40 mm, 0,5 kg

* 88 x 150 x 40 mm, 0,5 kg

Conformity: CE / RoHS / WEEE

200120

MICROSCOPY + METROLOGY SERVICES
Suisse made.



We show quality
Nous rendons la qualité visible
Wir machen Qualität sichtbar



Bettlachstrasse 2 | 2540 Grenchen | Switzerland
phone +41 32 654 21 00 | +41 22 776 82 28
ryfag@ryfag.ch | www.ryfag.ch