

Line Lights

Surface topography highlighted by shadow effect

Line lights are used to make fine surface structures on flat samples more visible. The contrast on the sample is enhanced by the oblique angle of moving light and resulting shadow effect, so that the surface structure is more visible - The resulting image is 3 dimensional.

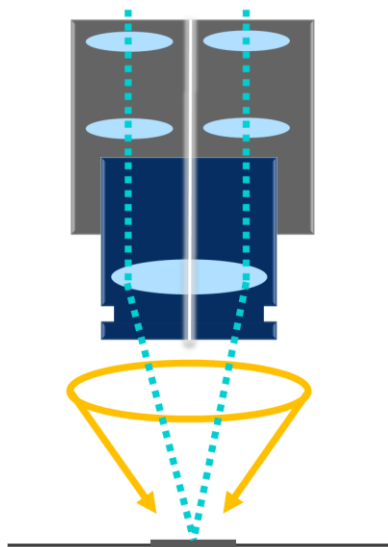
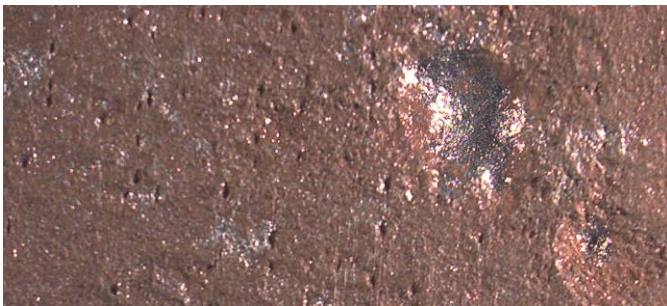
Typical Application Areas

Structured surfaces of flat materials such as paper, structured laminate films, or textiles.

Comparison of lighting options

Ring Light

With classic illumination using a ring light, the sample is illuminated uniformly from above from all sides, causing only minor shadows.



Line Light

When illuminating with line light, the sample is illuminated from the side at a flat angle, causing a 3D impression due to more shadows.

