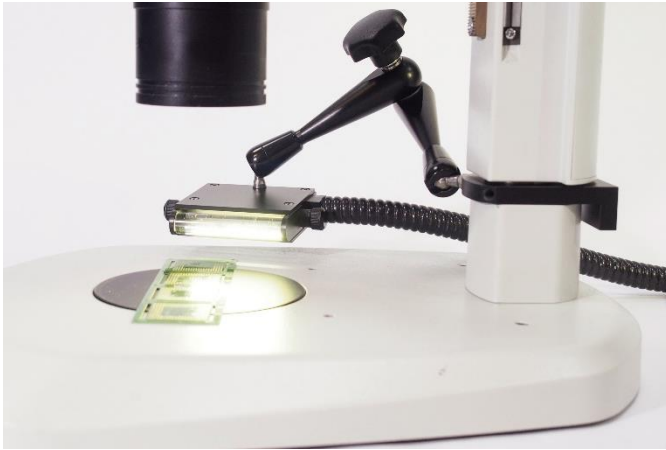


# Mounting options for line lights

## Articulated arm with adapter

By using an adapter and articulated arm, the line light can be mounted directly onto the microscope. For this, the adapter is mounted onto the column of the stereo microscope, while the articulated arm is screwed into the inner thread of the adapter. Up to 2 articulated arms can be mounted to the adapter.

This mounting option works for all stereo microscopes with a common column diameter of  $\varnothing$  32 mm (1.26"). The solution is space saving and provides an easy handling.



Accessories	Characteristics	Part No.
Adapter	For $\varnothing$ 32 mm (1.26") column	158.402
Articulated Arm	200 mm (7.87") length / 2x M6 threads	158.345



Adapter



Articulated Arm

## Articulated arm with base

By using our base and articulated arm, the line light can be positioned freely besides the stereo microscope. For this, the articulated arm is screwed into the inner thread of the base.

This set up is especially interesting for users who are looking for high flexibility or are missing other mounting options directly on the stereo microscope.



Accessories	Characteristics	Part No.
Base	$\varnothing$ 100 mm (3.94") / 3x M6 holes	158.340
Articulated Arm	200 mm (7.87") length / 2x M6 threads	158.345



Base



Articulated Arm